

AUGUST 2025

*Since 1998*

# CONNECTIONS

## MAGAZINE

[goodstuffconnections.com](http://goodstuffconnections.com)

**INSIDE:**  
DOG DAYS OF  
SUMMER



# Kiss Me, Kate

**MUSICAL**

MUSIC & LYRICS BY  
COLE PORTER

BOOK BY  
SAM & BELLA SPEWACK

PRESENTED BY SPECIAL ARRANGEMENT WITH CONCORD  
THEATRICALS ON BEHALF OF TAMS-WITMARK LLC

JULY 11, 12, 18, 19 • CURTAIN 8:00 PM  
SUNDAY, JULY 13, 20 MATINEE ONLY • CURTAIN 2:30 PM

# Move Over Mrs. Markham

**COMEDY**

COMEDY BY  
RAY COONEY & JOHN CHAPMAN

JULY 25, 26, AUG 1, 2 • CURTAIN 8:00 PM  
SUNDAY, JULY 27, AUG 3 MATINEE ONLY • CURTAIN 2:30 PM

**RITZ BITZ  
PLAYERS**

# DARE TO DREAM<sub>Jr.</sub>

*A Disney Musical Review*

BOOK DEVELOPED BY  
DISNEY THEATRICAL  
GROUP MUSIC

ADAPTED & ARRANGED BY  
PATRICK SULKEN  
ORCHESTRATIONS BY  
PATRICK SULKEN

ADDITIONAL VOCAL  
ARRANGEMENTS BY  
BRITT BONNEY

AUG 8, 9, 15, 16 • CURTAIN 7:30 PM  
SUNDAY, AUG 10, 17 MATINEE ONLY • CURTAIN 2:30 PM

# [title of show]

**MUSICAL**

MUSIC & LYRICS BY  
JEFF BOWEN

BOOK BY  
HUNTER BELL

AUG 22, 23, 29, 30 • CURTAIN 8:00 PM  
SUNDAY, AUG 24, 31 MATINEE ONLY • CURTAIN 2:30 PM

TICKETS ADULTS: \$20  
SENIORS (65+) & STUDENTS: \$15  
RITZ BITZ PRODUCTION: \$10

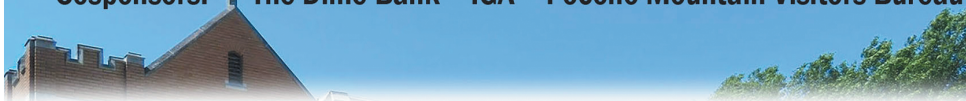
CONTACT BOX OFFICE: (570) 226 - 9752  
WEBSITE: RITZPLAYHOUSE.COM  
FACEBOOK: @RITZCOMPANYPLAYHOUSE  
INSTAGRAM: @RITZPLAYHOUSE

STREET ADDRESS  
512 KEYSTONE STREET, HAWLEY, PA 18428  
MAILING ADDRESS  
P.O. BOX 158, HAWLEY, PA 18428

THE RITZ RECEIVES STATE ARTS FUNDING SUPPORT THROUGH A GRANT FROM THE PENNSYLVANIA COUNCIL OF THE ARTS, A STATE AGENCY  
FUNDED BY THE COMMONWEALTH OF PENNSYLVANIA AND THE NATIONAL ENDOWMENT FOR THE ARTS, A FEDERAL AGENCY.

# Free Summer Concerts – 2025

Cosponsors:  The Dime Bank – IGA – Pocono Mountain Visitors Bureau



**St. Paul's Lutheran Church 401 Church St. Hawley, PA 1842 (570) 226-2411**

**July 5 The Good News Travelin' Band**

*Brian and Donna Miller*

**July 12 Classical Piano, Flute and Violin**

*Tomoko Kuhn – Koaki Shinkai – Lori Abbott*

**July 19 The Original Mixed Company**

*Dan McNichol – Jeff Chambers – Moses Young – John Romano*

**July 26 The Clazzical Saxophone Quartet**

*Bill Keil – Don Castellon – Jude Paster – Tim Pletcher*

**August 2 Callicoon Station & Pleasant Noise**

*Don Castellon – Elizabeth Rose – Jim Lowmes – Brewster Smith*

**August 9 Acoustic Global Progressive**

*Oakwife Olenka – DJ Terry*

**August 16 Keyboard, Bass and Vocals**

*Tomoko and David Kuhn*

**All concerts on Saturdays at 1:00 PM - Indoors**

## DEMAND IS HIGH AND BUYERS ARE OUT THERE!

A SAMPLE OF OUR 2024 SALES • CLOSED 49 DEALS • \$16.95 MILLION IN SALES



WE KNOW YOUR AREA, THE MARKET AND HOW TO SELL YOUR HOME FOR ITS OPTIMUM PRICE.

THE LAKE  
REGION

CALL TODAY FOR A FREE NO-OBLIGATION VALUATION... LET'S SEE WHAT WE CAN DO TO HELP YOU MEET YOUR REAL ESTATE NEEDS, WHATEVER THEY MAY BE.

**TOP 1%**

IN PIKE/WAYNE MLS FOR 2024

**#1 TEAM**

IN THE CHANT ORGANIZATION



*Experts*

**Eric & Brett Ehrhardt**



THE MOST TRUSTED, RESPECTED, AND RECOMMENDED REALTORS IN THE REGION.



Eric Ehrhardt

**570-470-5912**

eric@thelakeregionrealtors.com

Brett Ehrhardt

**570-470-5914**

brett@thelakeregionrealtors.com

OFFICE: 570-226-4518



**GET AN EXTENSIVE MARKETING PLAN FOR YOUR HOME THAT WORKS!**

MOTIVATED BUILDER says,  
"It's time to finish River's Edge Community!"



Don't miss being one of the last 3 LUCKY 'NEW NEIGHBORS' to be welcomed into RIVER'S EDGE!

**ONLY 3 BEAUTIFUL  
2-STORY UNITS LEFT!**

Move In Ready! Many Upgrades Included!  
HUGE \$70,000 Price Reduction Incentive!

**A GORGEOUS 55+  
ACTIVE ADULT COMMUNITY!  
PREMIER LOCATION!  
NEAR HISTORIC MILFORD, PA!**

**MAIN BEDROOM SUITE  
ON 1ST FLOOR!**

**STUNNING  
FULL SERVICE  
CLUBHOUSE!**

**LOW TAXES  
NO PA TAX  
ON PENSIONS &  
RETIREMENT PLANS**

**HURRY, DON'T WAIT!**

Now's your chance to make  
the beautiful *River's Edge*  
*Community* your home.

**Call 570-296-8881 Today!**

**RIVERSEGE55.COM**

Cash Buyers Preferred.  
*No mortgage contingency. No contingency  
on selling current home accepted.*



*Unit 100*



*Unit 102*



*Unit 108*

# CONNECT

AUGUST 2025

---

## FEATURES

### 6 SOAK UP THE SUMMER AT WALLY LAKE FEST

Get ready for a weekend packed with music, adventure, and lakeside vibes as Wally Lake Fest celebrates its 15th year of honoring everything we love about Lake Wallenpaupack and the surrounding Pocono Mountains region! From August 22–24, the area comes alive with events on the water, at area businesses, and all around the lake — offering non-stop fun for every age and interest.

### 8 MAKE SUMMER POP WITH A SUPER SNACK

When it comes to summer snacking, it's hard to top the combination of favorite seasonal flavors.

---

## COLUMNS

5 WORDS FROM THE TEAM

10 DISASTER BLASTER

12 LIVING GREEN

14 MRS. DOGOOD

16 MONEY

18 POCONO SECRETS

20 EVENTS

# CONNECTIONS Magazine

president • publisher • editor in chief

**deborah bailey**

production manager

**meica drake**

---

editorial correction services

**kay marks**

---

contributing writers

**michael krupa**, *Finance*

**terri schlichenmeyer**, *Book Review*

**la guzda**, *Pocono Secrets*

**pike/wayne conservation partnership**, *Living Green*

**disaster blaster**, *Home Tips*

**mrs. dogood**, *Letters*

---

## CONNECTIONS Magazine

3305 Lake Ariel Highway  
Honesdale, PA 18431  
570.647.0085 • Fax 570.647.0086  
cmag@ptd.net • thinkconnections@yahoo.com  
www.connections-magazine.com

Connections Magazine is not responsible for typographical errors, mistakes or misprints. All advertising, including photographs, is the property of Connections Magazine and not that of the advertiser. The advertiser has purchased the right of reproduction only in Connections Magazine and does not have the right to reproduce the ads in any other place or publication. Connections Magazine reserves its rights to exercise its discretion in the selection of advertisements.

© COPYRIGHT 2017 CONNECTIONS MAGAZINE



### WHAT A DILEMMA

To laugh is to risk appearing a fool.  
To weep is to risk appearing sentimental.  
To reach out for another is to risk involvement.

To expose feelings is to risk rejection.  
To place your visions before the  
crowd is to risk ridicule.

To love is to risk not being loved in return.

**\*\*To go forward in the face of  
overwhelming odds is to risk failure.**

But risks must be taken, because the  
greatest hazard in life is to risk nothing.  
The person who risks nothing, does nothing,  
has nothing, is nothing.

We may avoid suffering and sorrow, but we  
cannot learn, feel, change, grow,  
love or know GOD.

Chained by our own self-assurances, we  
are a slave. We have forfeited our freedom.

**Only the person who dares to take risks and  
to trust in their GOD will ever be made FREE.**

---

In 1997, Rev. Edwin E. Bailey, father of the editor, gave this poem to his daughter 8 days before he had a stroke and 3 weeks before he died. The poem was adapted from works by Leo Buscaglia. Edwin hand wrote this on a scrap of paper and gave it to his daughter, Deborah, saying the words, "Someday you'll understand these words and use them. God bless sweetheart." \*\*These words were used in making the decision to purchase Connections Magazine in 2002.

CONNECTIONS COPYRIGHTED 2007

# “Hello August!

Let's fill this month  
with laughter, sunshine,  
and endless fun!”

– Unknown

**S**oak up the summer at Wally Lake Fest! Endless fun, unforgettable views, and entertainment for all ages... *get connected on page 6.*

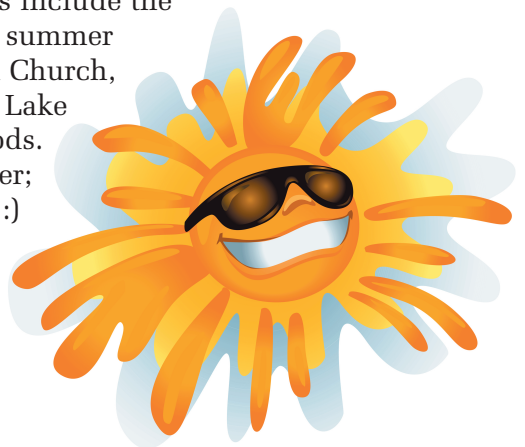
When it comes to summer, it's all about snacking. It's hard to top the combination of favorite seasonal flavors. Make summer pop with a super snack... *get connected on page 8.*

Add an unusual love story to your August reading. Perched on a bluff overlooking the confluence of the Lackawaxen and Delaware Rivers, with a sweeping view of the historic Roebling Bridge, the Zane Grey House is a must-see destination... *get connected on page 18.*

Endless fun all month long with our enormous calendar of events that will add laughter and sunshine into the rest of your summer... *get connected on page 20.* Some CM favorites include the Ritz Company Playhouse, free summer concerts at St. Paul's Lutheran Church, the Wayne County Fair, Wally Lake Fest, and Harmony in the Woods.

Enjoy the dog days of summer; we'll connect again in the fall :)

The CM Team  
570.647.0085  
cmag@ptd.net





# Soak Up the Summer at Wally Lake Fest

August 22–24, 2025

Endless Fun | Unforgettable Views  
Entertainment for All Ages

**Get ready for a weekend packed with music, adventure, and lakeside vibes as Wally Lake Fest celebrates its 15th year of honoring everything we love about Lake Wallenpaupack and the surrounding Pocono Mountains region! From August 22–24, the area comes alive with events on the water, at area businesses, and all around the lake — offering non-stop fun for every age and interest.**

## **Float, Paddle, or Cruise Your Way into the Weekend**

The lake is the place to be, and Wallypalooza is the main event you won't want to miss! On Saturday, local bands will rock the water on a floating stage, while spectators enjoy the show from boats or from the shore at Tafton Dike. This year's high-energy lineup features Sydney Irving, Seems Like Tuesday, and Ten02!

The music doesn't stop there — the party continues all weekend with live performances at local venues, starting Friday night and ending Sunday with a lively beach set by DJ Gozzi of Live Sounds Entertainment.

## **Adventure Awaits on Land and Water**

Want to get on the water? Rent a pontoon, paddleboard, or kayak from one of the many local marinas, or join a 50-minute guided boat tour to explore the lake's beauty and history. Sign up for sailboat rides at Ironwood Point with the Paupack Sailing Club.

Beyond the shoreline, the entire region comes alive with activities:

- The 13th Annual Ride for the Lake — a scenic 41-mile motorcycle tour
- Boat & Outdoor Expo — for adventurers and lake lovers (Friday–Sunday)
- Vendor Fairs & Artisan Markets — shop unique finds and local creations beginning Friday at noon
- Live Music, Car Cruise, Food Trucks, Demonstrations, and More

## **Hop Aboard the Free Shuttle & Explore It All**

No need to worry about parking or driving between events — just park once and hop on the free shuttle running all day Saturday and Sunday. Shuttles make stops at key festival locations around the lake, with free parking available at Wallenpaupack North Primary, Intermediate, and Middle Schools (off Route 6 on Atlantic Avenue).

## **Celebrate the Spirit of Lake Life**

Wally Lake Fest is more than just a weekend — it's a celebration of everything that makes Lake Wallenpaupack such a treasured destination. Whether you're cruising the waves, strolling through the artisan markets and boat show, or enjoying a sunset concert, this is your moment to savor summer before it slips away.

Presented by Lighthouse Harbor Marina and hosted by The Chamber of the Northern Poconos, with support from the Pocono Mountains Visitors Bureau.

Stay up to date with the full schedule at [WallyLakeFest.com](http://WallyLakeFest.com) and follow along on Facebook and Instagram @wallylakefest.



# Make Summer Pop with a Super *Snack*

**When it comes to summer snacking, it's hard to top the combination of favorite seasonal flavors.**

You can enjoy both the sweetness of freeze-dried strawberries and popped popcorn, a whole grain that's 100% unprocessed with no additives, hidden ingredients or GMOs, in this three-ingredient Strawberries and Cream Popcorn recipe.

Just drizzle white chocolate over popped popcorn then sprinkle with ground freeze-dried strawberries for a perfectly delicious way to meld all your favorite flavors of summer into one easy, convenient snack.

Find more summer snacking solutions by visiting [Popcorn.org](http://Popcorn.org).

## **Strawberries and Cream Popcorn**

*Recipe courtesy of The Popcorn Board*

*Servings: 4-6*

- 1/4 cup freeze-dried strawberries
- 6 cups popped popcorn
- 1 cup white chocolate chips, melted

In small food processor or spice grinder, pulse freeze-dried strawberries until finely ground. Place popped popcorn in large bowl. Drizzle melted chocolate over top; toss until well coated. Sprinkle evenly with ground freeze-dried strawberries; toss until well coated.

Scrape onto large parchment paper-lined baking sheet, spreading into even layer.


Let stand at room temperature 30-60 minutes, or until chocolate is set and hardened. To serve, break into pieces.

**Tips:** To melt chocolate, place chocolate chips in heatproof bowl set over saucepan of barely simmering water, stirring 3-5 minutes, or until smooth.

To melt chocolate in microwave, place chocolate chips in microwave-safe bowl or measuring cup. Microwave on medium, stirring every 30 seconds, for 1-2 minutes, or until smooth and melted.


*Family Features*

**WALLY LAKEFEST**  
 Lake Wallenpaupack's biggest event of the year!  
 August 22-24, 2025



**WallyPalaza**  
 Live Music on the Lake

AUG 23  
 11 AM - 4 PM



WALLYLAKEFEST.COM

**HEADLINER: SYDNEY IRVING**  
**SPECIAL GUESTS: SEEMS LIKE TUESDAY TENO2**

OPEN MARKET & VENDOR FAIRS  
 BOAT & OUTDOOR SHOW  
 LIVE MUSIC ON LAND & LAKE  
 RIDE FOR THE LAKE  
 FUN FOR THE ENTIRE FAMILY

*Dine Overlooking Lake Wallenpaupack*



**Gresham's**  
 EST. 1999  
**CHOP HOUSE**

Steaks, Seafood, Italian Specialties  
 Open Tuesday thru Sunday at 4 PM

SBA 2013 Eastern PA U.S. Small Business of the Year

*Dock and Dine*  
 Take-Out Available



Lake Wallenpaupack, PA  
 www.greshamschophouse.com 570.226.1500

Some things are do-it-yourself.

Insurance isn't one of them.

With Olsommer-Clarke Insurance, you get lots of good stuff: answers to all your questions (even ones you didn't know you had as a homeowner), just the right coverage you need, and the promise of service that shines above the rest.



**OLSOMMER-CLARKE**  
 INSURANCE GROUP, INC.

*Service that shines above the rest*




**HONESDALE** • 1014 Church Street • 570-253-6330  
**HAMLIN** • 610 Hamlin Hwy. • 570-689-9600  
**MOSCOW** • 100 N. Main Street • 570-842-9600

**TOLL FREE: 800-566-8999**  
**OlsommerClarke.com**

The Critical Importance of Environmental

# TESTING

**Keeping Our Children Safe  
from Hidden Hazards**

*Provided by Disaster Blaster*

As guardians of the next generation, it is our collective responsibility to ensure that schools are not only places of academic growth but also havens of health and safety. Environmental testing in schools plays a pivotal role in identifying hidden hazards that can adversely affect students, teachers, and staff. Among the most common and concerning environmental threats in educational buildings are asbestos, radon, mold, and water damage, making proactive detection and management of these issues essential for maintaining a safe learning environment.

## Asbestos: The Silent Threat in Older Buildings

Asbestos is a naturally occurring mineral fiber that was widely used in construction materials throughout much of the twentieth century. Many school buildings constructed before the 1980s may contain asbestos in insulation, floor tiles, ceiling tiles, pipe coverings, and even paint! In fact, in older schools, asbestos materials were even used on the back of basketball hoops, woven into stage curtains, and installed on walls for sound dampening. Asbestos is dangerous because when its fibers become airborne and are inhaled, they can cause serious health problems, including lung cancer, mesothelioma, and asbestosis.

Testing for asbestos is crucial in schools, especially during renovation or demolition projects, as disturbing these materials can release hazardous fibers into the air. Given the particularly long latency period of asbestos-related diseases, early detection and management are vital.

### *What to do if asbestos is found:*

Most schools are required to include asbestos material identification and maintenance in their building management plan, but due to the number of asbestos-containing materials often found in schools, this can be a challenge. If asbestos is discovered, the recommended approach is usually to leave undisturbed, intact materials in place while ensuring they are regularly monitored for damage. If the asbestos-containing materials are damaged, are at risk of being damaged, or will be disturbed by planned construction, professional remediation is necessary. Asbestos abatement requires qualified and properly licensed teams to ensure this work is performed safely and properly.

## Radon: The Invisible Gas

Radon is a colorless, odorless, radioactive gas produced naturally by the decay of uranium in the soil and rock beneath our feet. It can enter school buildings through cracks and gaps in foundations, where it can collect at high levels indoors. Long-term exposure to elevated radon levels is the second leading cause of lung cancer in the United States after smoking, and children are particularly vulnerable due to their developing respiratory systems.

Unfortunately, because you can't see, taste, or smell radon gas, it could be collecting inside schools without you even knowing. This makes testing for radon in homes, businesses, and schools incredibly important, because its presence cannot be detected without specialized equipment. The Environmental Protection Agency (EPA) recommends that all schools test for radon to ensure levels remain below the recommended action threshold.

### *What to do if radon is found:*

If radon testing reveals levels at or above the EPA's action level (4 pCi/L or higher), mitigation measures should be implemented by a qualified and properly licensed radon mitigation company. These may include improving ventilation, sealing foundation cracks, and installing sub-slab depressurization systems. Regular follow-up testing is essential to verify the effectiveness of remediation efforts, evaluate adjustments that may be necessary, and maintain a safe indoor environment.

## Mold: The All-Too-Common Allergen

Mold can grow in any indoor environment where moisture is present, often resulting from leaks, humidity, or water damage. Mold spores can be inhaled and cause a range of health problems, from mild allergic reactions to severe respiratory conditions, especially for children with asthma or weakened immune systems. Mold also degrades building materials and can lead to costly repairs if unchecked.

Testing for mold is important in schools because children spend extended periods indoors, and mold exposure risks can accumulate. Recent research into the effects of exposure to mold spores and their mycotoxins has shown that there may be a link between some chronic health issues and respiratory problems and long-term mold exposure – particularly for children with developing lungs and immune systems. Inspections typically include visual assessments and, when necessary, air or surface sampling to identify hidden growth.

### *What to do if mold is found:*

If mold is detected, the affected area should be isolated, and any water intrusion sources must be identified and repaired. Professional mold remediation by qualified professionals is recommended to remove contaminated materials and ensure thorough cleaning and drying of the affected areas. Post-remediation testing is recommended to confirm the effectiveness of the cleanup and ensure the learning environment is safe before reoccupation.

*Article continued on our website.*



### **About Disaster Blaster**

Disaster Blaster is an indoor environmental firm serving the Northeastern PA Area. We have been providing our local area with unparalleled mold remediation, water damage mitigation, basement waterproofing, basement waterproofing, asbestos abatement, radon mitigation, and fire / smoke restoration services for decades, and are proud to have been named *The World's Greatest Indoor Environmental Firm*. For more about Disaster Blaster, as well as more helpful tips, please visit our website at: [www.disasterblaster.com](http://www.disasterblaster.com) or call our office at (570) 963-1123.

## living green

# Parks as Classrooms

*Submitted by Neil Koch*

**Delaware Water Gap National Recreation Area (DEWA) provides visitors a chance to explore various landscapes, diverse habitats, and discover the fascinating natural and cultural history of the local area. Over 70,000 acres of floodplains, hardwood forest, and mountain ridges in both New Jersey and Pennsylvania make up the park.**

The park supports species such as black bears, bald eagles, timber rattlesnakes, peregrine falcons, and native trout. Ecosystems include hemlock ravines with massive rhododendrons, ridgetops with native prickly pear cactus, and bountiful blueberry patches. For over 10,000 years, people have shaped this land, just as the land has shaped the people. Situated within the most densely populated region in the

United States, DEWA is an ideal destination for unique, place-based educational opportunities. Visitors may also enjoy a multitude of recreational activities along 40 miles of the longest free-flowing river east of the Mississippi.

DEWA has a variety of programs and activities designed to spark curiosity and inspire discovery. Along with our park partners, such as the Pocono Environmental Education Center, we strive to provide an assortment of place-based learning opportunities in this incredibly unique area. Educators, parents, and students of all ages are encouraged to explore the park and discover what inspires them. Get started by checking our teachers' guides and supplementary educational materials available for free on our website!

In addition, park rangers offer free programs, demonstrations, and events to help visitors learn more about the region and connect with nature and history. Whether you're looking to attend a guided hike with your family, become a junior ranger, or learn how to fish - we



## MACRO MONDAYS

Want to learn about the critters in the creek?

PARK RANGERS WILL GET YOU UP CLOSE TO LIVE MACROINVERTEBRATES SO YOU CAN LEARN ABOUT THE PARK'S STREAMS AND WATERWAY HEALTH.

**JUNE 30, 2025 - AUGUST 18, 2025**

**10 AM - 3 PM**  
**BUSHKILL MEETING CENTER**  
 6414 Milford Rd, East Stroudsburg, PA 18302

## SUMMER REOCCURRING EVENTS SCHEDULE

	<b>MONDAY - MACRO MONDAYS</b> <b>June 30, 2025 - August 18, 2025</b> Park rangers will get you up close with live macroinvertebrates so you can learn about the park's streams and waterway health. <b>10:00 AM - 3:00 PM</b> 6414 Milford Rd, East Stroudsburg, PA 18302
	<b>FRIDAY - FISHING FRIDAYS</b> <b>June 27, 2025 - August 15, 2025</b> Learn the basics of fishing, including setting up a fishing rod, casting, and knot tying. <b>RSVP required.</b> <b>9:00 AM - 12:00 PM</b> Call 570-426-2452 to make a reservation. Hidden Lake, East Stroudsburg, PA 18302
	<b>FRIDAY - WOODLAND WALKS</b> <b>May 30, 2025 - August 15, 2025</b> Enjoy a Ranger's Choice Woodland Walk from the parking area to the falls at George W. Childs Park! <b>9:00 AM and 2:00 PM</b> Silver Lake Rd & Park Rd, Dingmans Ferry, PA 18328
	<b>FRIDAY - SCIENCE SUMMER CAMP</b> <b>June 20, 2025 - August 1, 2025</b> Join this free, family-friendly event that offers a variety of science activities exploring the resources within the park. <b>10:00 AM - 2:00 PM</b> Located at a different site each week. Check event calendar for more details.

For more details and updates about these events, please visit the park's website for more information.

## FISHING FRIDAYS

EVERY FRI THROUGH AUG. 15TH

BEGINS 9 AM

AT HIDDEN LAKE RECREATION SITE

Join park rangers for a reel good time!

- Learn rod setup, casting, and knot tying
- Practice fishing from the shore
- Rangers provide hands-on lessons at the picnic area
- All ages welcome
- No fishing license needed
- Equipment supplied through a partnership with PA Fish & Boat Commission

NOTE: This program is catch and release only.

**Call 570-426-2452 to make a reservation!**

have you covered! All regularly scheduled programs are free of charge and may be found on the park's website calendar. Simply said, all of us here welcome your visit and encourage you to

experience this extraordinary space! For more information about our field trips and public programs check the park website or give us a call at: 570-426-2452.

**BEAUTIFUL LAKE WALLENPAUPACK**  
 Route 6 • 570-226-9726

**HISTORIC DOWNTOWN HONESDALE**  
 Church & 6th Sts. • 570-253-1860

**CHARMING MILFORD**  
 Route 2001 (Water St) • 570-296-9610

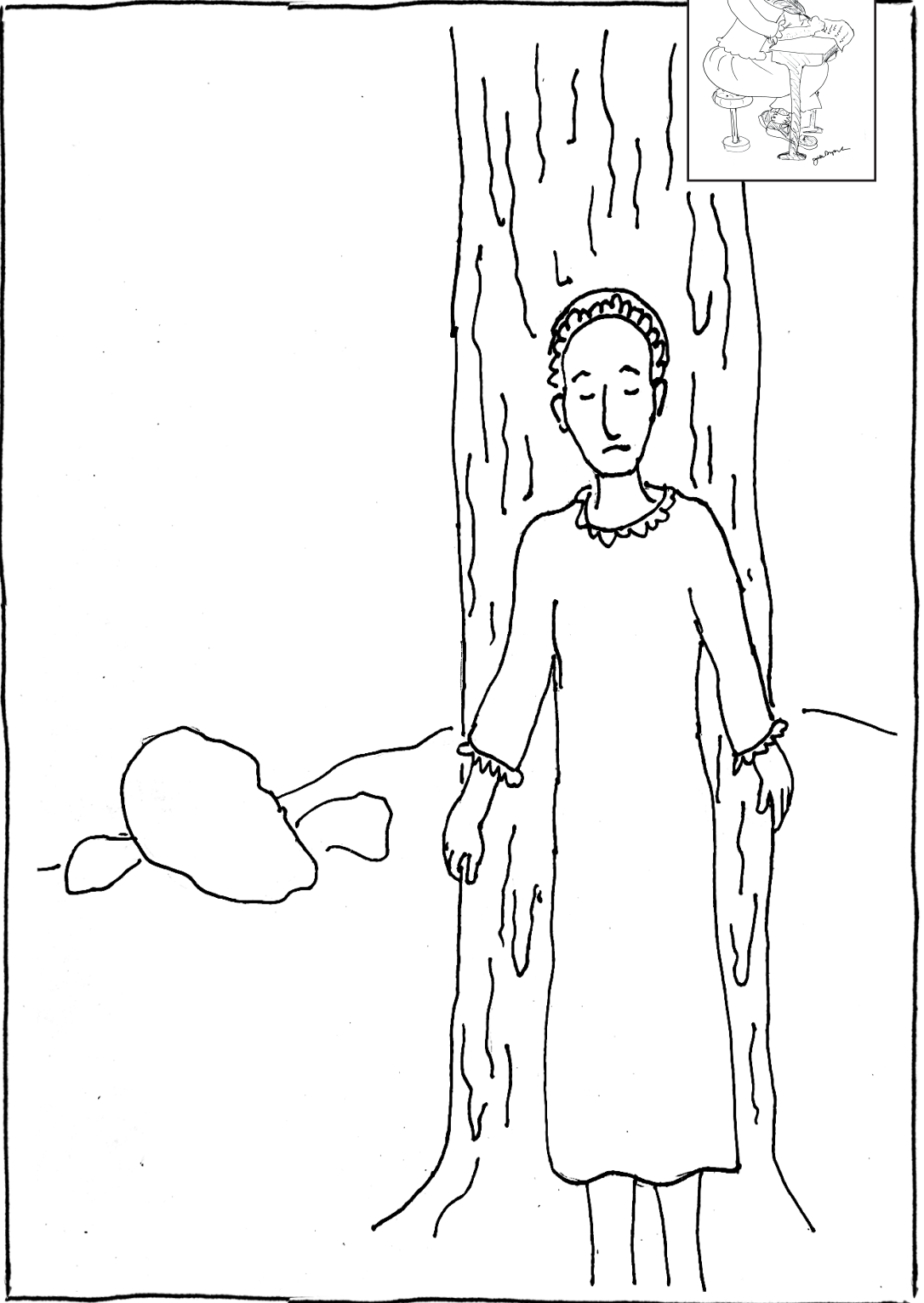
**VanGorders.com**

**Nature's Grace**  
 HEALTH FOODS & DELI

**Natural & Organic Foods**

- Full line of supplements and vitamins •
- Gluten-free, Sugar-free, Non-dairy foods, Hoagies and Take-out lunches
- Fresh Juices •

947 Main Street, Honesdale, PA 18431  
 570.253.3469  
[www.naturesgrace.net](http://www.naturesgrace.net)



# TREES

By The Reverend Mrs. Silence DoGood

Dear Editor,

People have asked me why I do it. I know it looks strange. So, I thought I had better explain it. With this confession you will know why.

It all began when I went to one of Halo's community breakfasts at the community center which is offered by its volunteers on the second Saturday of every month. The proceeds go toward supporting the center as well as other service organizations. The breakfast is country style and includes pancakes with real maple syrup, eggs, bacon, sausage, homemade apple sauce, apple or orange juice and coffee or tea. People bring homemade bread, muffins and pies. I like going there because it gives me a chance to mingle socially with members of my congregation as well as members of the community.

When I entered the center, I saw Raphaela Martins sitting by herself. She is not a member of my church, but I know her. She is a retired English teacher and often gives lectures on birds, particularly hummingbirds. I asked her if I could join her and she was happy to see me. We went to the buffet together and began enjoying our delicious meal.

"I've seen you several times standing with your back against the big tree on your property. Why do you do that?" I asked. She said that she couldn't talk about it there but invited me to her house to discuss it. I told her that I could stop over on Monday, and we agreed to one o'clock.

As the senior pastor of The First Church of God's Love in the bucolic farming hamlet of Halo, Pennsylvania, I often visit people in their homes. This was the first time I visited Raphaela. Knowing of her knowledge of birds, I was not surprised to see quite a few Hummels on her mantel depicting scenes with birds. We sat at her dining room table where we had tea and homemade bundt cake.

"The silver maple in my front yard is one of the oldest trees in the county. It is very wise to have lived so long. Trees have wisdom. The blue spruce in the back garden lost about a third of its top. Maybe storms. But then over the years it grew a new one. The hawthorn

tree at the entrance broke off many branches on its right side during an ice storm. Now new growth is beginning to replace the missing ones. Trees have internal knowledge."

"So, is that why you stand with your back against the silver maple?"

"I stand with my back firmly against the bark because it reduces stress. After a few minutes my mood improves, and I feel centered. I am totally present at that very moment. Mentally I feel that the wisdom of the tree is being shared with me."

She went on to tell me that she also practices Tai Chi which is a Chinese martial art from the 12th century. She learned it many years ago and does it several times a week in her home. She said that it is "meditation in motion. One works with the flow of Yin ... softness and Yang ... hardness. Yin is said to be the mother of Yang using soft power to create hard power."

I thanked her for a wonderful visit. "Do you think you will stand next to a tree?" "Yes, I think I will."

It took me over a week to find the time to do it or was it the courage. We have a big tree at the parsonage. Its trunk is about three feet wide. My neighbor told me that it's elm. At first, I was reluctant to place my back firmly against the trunk but then I thought of Raphaela and I did. It felt hard at first. But then my mind's apprehension slowed, and I began to quiet. Then I felt calm. It's strange but the word that I kept thinking was kindness. I wasn't sure if it was Raphaela's kindness or the tree's. Maybe both.

Amen.



**The Reverend Mrs. Silence DoGood**

Senior Pastor

Executive Director

President

Chairman

Choir Master (part-time)

**The First Church of God's Love**

*Copyright © Bill Donnelly, 2025  
All Rights Reserved.*

# Losing a Loved One

## Things to Remember Part 2

..... Provided by Michael Krupa

### ONE TO SIX MONTHS AFTER

As you continue to transition, there are a number of decisions you will begin to face in order to tie up any loose ends and start focusing on life again.

**Make sure mortgage and insurance payments continue to be made.**

**Notify utility and service companies.**

**Review all account titling.** Remove your loved one's name from any joint accounts and transfer them to your name (you'll need a death certificate). Any automatic payments or debits should be reassigned before closing the accounts.

**Locate and file the will in state probate court.**

**Begin settling the estate.** Work with close advisors to pull together all necessary documents to determine the contents of your loved one's estate. If you're the executor, you will need to file an inventory and appraisal for all tangible property with the probate court within 90 days of the loss, as well as an account of any income to the estate, expenses and distributions from the estate.

**Notify creditors** and close any credit cards necessary.

**Work with your financial advisor and other professionals** to determine how you want to handle any inheritance and reevaluate your financial needs. Look at your sources of income and make necessary adjustments to investments while maintaining access to enough cash to cover living expenses. If you like, consider setting up a memorial or charitable donation as a lasting tribute to your loved one.

#### Let them know



Notify the entities and individuals who have financial relationships with the deceased. They may include:

- Banks, credit unions and credit card companies
- Social Security Administration
- Department of Veterans Affairs, if applicable
- Pension administrators
- Investment companies
- Life insurance companies
- Mortgage and auto loan providers
- Utility providers

#### Let's talk about it



If you are inheriting substantial assets or taking over responsibility for household finances, you may need to make decisions about your own financial future. Let's discuss how your changing circumstances could impact your long-term financial goals and the steps we can take to minimize the tax implications.

**Close any email, social media and online accounts** still in your loved one's name.

**Send thank-you notes** to those who sent flowers, food, donations, or who were especially kind to you after the loss.

### TIP

The estate should pay any outstanding debts and bills, which lowers the total value of the estate and could lower any subsequent inheritance taxes.

## SIX MONTHS TO A YEAR AFTER

The death of a loved one may cause you to consider whether you've made the necessary preparations for passing on your legacy. Start by reviewing and updating your own estate plan, especially if the loved one you lost was among the original beneficiaries.

**Work with your financial advisor and legal professional to deal with any probate issues.**

**Talk to a tax professional about what taxes need to be filed** on behalf of the deceased. Usually one is required within nine months of the loss.

**Change the titles on tangible property.**

**Plan for yourself, your children and extended family.** Review your own estate plan, including insurance policies, legal documents, investment plans, etc., and revise as necessary; then schedule a time for you and your family to go over these

details with your financial advisor. If your child is in college, contact the financial aid office to see if a change in financial circumstances could improve the aid package.

### We can help

Of course, this is simply a guide to help you and your family address the most common issues that arise after a loss. We understand that your situation may be different, and we're available to help you work through any decisions that need to be addressed now and further down the road. Let us know when you're ready.



#### Michael Krupa

614 Church Street  
Honesdale, PA 18431  
570-253-0121  
michaelkrupa@krupawm.com

*Content Prepared by Broadridge Investor Communication Solutions, Inc. This information, developed by an independent third party, has been obtained from sources considered to be reliable, but Raymond James Financial Services, Inc. does not guarantee that the foregoing material is accurate or complete. This information is not a complete summary or statement of all available data necessary for making an investment decision and does not constitute a recommendation. Securities offered through Raymond James Financial Services, Inc., member FINRA/SIPC. Investment advisory services are offered through Raymond James Financial Services Advisors, Inc.*



## Everything in writing

This checklist is meant to help surviving family deal with practical matters during what can be a difficult time. It is not exhaustive and should be viewed only as a starting point for compiling your own personalized list to ensure your loved ones will be taken care of in the future.

### FINANCIAL

- ▶ Banks, credit unions and credit card companies
- ▶ Social Security Administration
- ▶ Department of Veterans Affairs, if applicable
- ▶ Pension administrators
- ▶ Investment companies
- ▶ Life insurance companies
- ▶ Mortgage and auto loan providers
- ▶ Utility providers

### MEDICAL

- ▶ Living will or advanced medical directive
- ▶ Medical or healthcare power of attorney
- ▶ Long-term care insurance

### PERSONAL

- ▶ Birth/marriage/death certificates
- ▶ Divorce and custody agreements
- ▶ Durable power of attorney
- ▶ Funeral instructions
- ▶ Security codes, keys, usernames and passwords to accounts (e.g., safe deposit boxes, gun safes, alarm codes, online accounts for social media, email, phone, utilities, cable, auto loans, insurance, etc.)
- ▶ Family love letter and letter of instructions – include important financial and personal details, from your worldview to special end-of-life requests.

# POCONO secrets

## The Zane Grey House: An Unusual Love Story

By LA Guzda

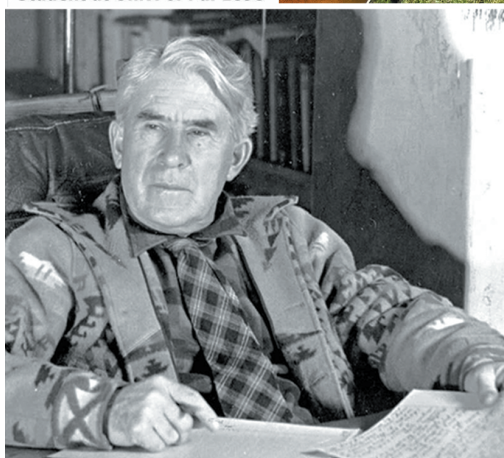
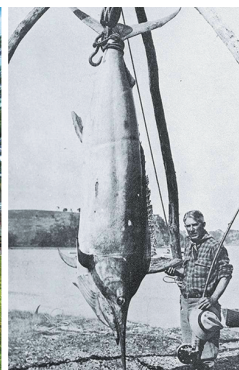
**Perched on a bluff overlooking the confluence of the Lackawaxen and Delaware Rivers, with a sweeping view of the historic Roebling Bridge, the Zane Grey House is a must-see destination. Today, visitors come for the scenery, the history, and the chance to spot bald eagles from the boat launch just below. Yet, the most captivating aspect of this landmark lies in the unusual love story that shaped it.**

I first fell in love with Zane Grey's writing when I read *Riders of the Purple Sage*. His descriptions are so vivid you can almost smell the desert air and taste the dust of the trail. Like Louis L'Amour, Grey is credited with romanticizing the mystique of the cowboy. Over his lifetime, he authored 89 western adventure novels, and an astounding 112 films were adapted from his stories.

Born Pearl Zane Grey in January 1872 in Zanesville, Ohio, Grey attended Penn State on a baseball scholarship while studying dentistry. After graduating in 1896, he opened a practice in New York City but wrote at night to escape the drudgery of his profession. An avid outdoorsman, he often escaped to the Delaware River to fish and camp with his brother. It was during one of these trips that he met Lina "Dolly"



Student at Univ. of Pa. 1895



Roth, a local schoolteacher from a prominent family.

Zane and Dolly married in 1905 and settled in Lackawaxen, raising three children—Romer, Betty, and Loren—in the home that now bears his name. Dolly's inheritance and business savvy were instrumental in Zane's success. She left her teaching job, edited his manuscripts, and negotiated contracts with publishers and film studios. Remarkably, the couple split their earnings fifty-fifty, with Dolly managing household expenses from her share.

While Dolly built his career and tended to their family, Zane was often away—fishing, traveling, and engaging in numerous love affairs. Dolly, aware of his nature, accepted his behavior. Zane made no apologies; he was honest from the start about the kind of husband he would be. Despite this unconventional arrangement, their deep bond endured, documented in their heartfelt correspondence. Dolly and Zane Grey: Letters from a Marriage by Candace Kant (2011) offers a fascinating glimpse into their relationship and the

early 20th-century publishing and film industries.

Beyond his iconic westerns, Grey wrote two hunting books, six children's books, three baseball books, and eight fishing books, many of which became bestsellers. During the height of his career (1917–1926), he appeared on the top ten best-seller list nine times, each requiring sales of over 100,000 copies. Even after his death, his publisher, Harper, released new titles annually until 1963, thanks to a stockpile of manuscripts.

Through Zane's words and Dolly's unwavering support, the Greys lived a life full of adventure—most of it in California, but their hearts remained tied to the Delaware River. Today, they rest side by side in Lackawaxen, the place they loved most.

For more information on visiting the Zane Grey House, visit:  
<http://www.nps.gov/upde/historyculture/zanegrey.htm>

Follow us on Instagram @PoconoSecrets and on Facebook @PocoPike  
 Visit [www.LAGuzda.com](http://www.LAGuzda.com) or [www.PoconoSecrets.com](http://www.PoconoSecrets.com)

# a+r+e

ARTS RECREATION ENTERTAINMENT

YOU CONNECTED

## THE AREA'S *GOOD STUFF*

# AUG '25

### Ongoing Events

#### MONDAYS

##### Grillin' in Grant's Woods

5-8 p.m. Grant's Woods, The Settlers Inn, Hawley. Until Sept. 1. Unique open-air dining experience in a relaxed, woodland setting. Reservations highly recommended: 570-226-2993. Info: desk@thesettlersinn.com.

#### MONDAYS

##### Brewpub Bingo

6-8 p.m. Wallenpaupack Brewing Company, Hawley. Until Dec. 29. Free fun and the chance to win WBC prizes. Family-friendly event. Must be 21 to drink with ID. Free to play. Info: 570-390-7933 or content@wallenpaupackbrewingco.com.

#### TUESDAYS

##### Tuesdays on the Terrace with Live Jazz and Casual Dining

5-9 p.m. French Manor Inn and Spa, Newfoundland. Through Aug. 26. Reservations & info: 570-676-3244 or info@thefrenchmanor.com.

#### WEDNESDAYS

##### Jazz on the Deck

5:30 p.m., 7:30 p.m. The Settlers Inn, Hawley. Through Aug. 27. Live jazz, farm-to-table summer menu, and a view of the garden. Reservations recommended. Info: 570-226-2993 or desk@thesettlersinn.com.

#### WEDNESDAYS

##### Stitch and Sip:

##### Yarn Over the Falls Weekly Crafty Hangout

6-8 p.m. Hawley Silk Mill, Hawley. Meet in the lobby of the Hawley Silk Mill in a relaxed, no-stress meet-up perfect for knitters, crocheters and fiber lovers of all kinds. Whether you're a beginner or have been crafting for years, everyone's welcome. BYOB. Info: 570-226-1337 or hawleysilkmill.com or info@cocooncoffeehouse.com.

#### THURSDAYS

##### Jazz Nights at Here & Now Brewing Company

6:30-9 p.m. Here & Now Brewing Company, Honesdale. Through Dec. 25. Musical guests appear weekly and each week takes you on a different journey of sound. Free. Info: 570-253-0700 or info@hereandnowbrewing.com.

#### THURSDAYS

##### Trivia Night With B-Ray

6-8 p.m. Through Aug. 28. Wallenpaupack Brewing Company, Hawley. Flex your brainpower and gather your sharpest friends for a showdown with B-Ray Trivia. Team up to six. Stay tuned on social media for releases every Thursday. Info: 570-390-7933 or content@wallenpaupackbrewingco.com.

#### THURSDAYS-SATURDAYS

##### Maple Syrup Tasting on the Farm

11 a.m.-5 p.m. Pocono Mountain Maple, Newfoundland. Through Dec. 19. Indulge in a tasting of all

organic and kosher maple syrup flavors each with its signature taste. Visit the farm store café. Try a maple water tasting: all-natural hydrating electrolyte drink sourced directly from the maple trees.

Info: 570-499-8974 or info@poconomtnmaple.com.

#### FRIDAYS

##### Hawley Farmers' Market

2-5 p.m. Bingham Park, Hawley. Through Oct. Delicious fresh & local produce and more. All types of PA Preferred fresh & local produce in season. Rain or shine. Info: 570-226-1644 or hawleyfarmersmarket@gmail.com.

#### WEDNESDAYS, FRIDAYS-SUNDAYS

##### Live Music at the Brewery

Call for hours. Until Dec. 28. Wallenpaupack Brewing Company, Hawley. Enjoy live tunes from NEPA and Tri-State artists while sipping on delicious brews. Free. Info: 570-390-7933 or content@wallenpaupackbrewingco.com.

#### FRIDAYS-MONDAYS

##### Public Tours at Grey Towers

Noon-3 p.m. Grey Towers National Historic Site, Milford. Through Oct. 31. The home of Gifford Pinchot, America's first forester and founder of the USDA Forest Service. Info: 570-296-9630 or greytowers@fs.fed.us.

#### SATURDAYS

##### Wayne County Farmers' Market

9:30 a.m.-12:30 p.m. Next to Dave's Super Duper grocery store, Honesdale. Through Oct. 25. Fresh and local produce. All types of PA Preferred fresh and local produce in season. Items like microgreens, seasonal garden vegetables, cold brewed coffee, fresh eggs, meats, and of course fabulous baked goods. Free. Info: 570-488-5435.

#### SATURDAYS

##### Newfoundland Farmers' and Artisans' Market

10 a.m.-2 p.m. 994 Main St., Newfoundland. Mid-May to Oct. Locally grown produce and local meats, fresh baked goods, small batch jams and jellies, hand painted artworks, candles, soaps, dog treats and jewelry; all made here by area farmers & artists and offered in a beautiful dog friendly park setting that includes walking trails and a playground. Free parking. Info: Facebook page or gardeningjones@yahoo.com.

#### SATURDAYS & SUNDAYS

##### Lakeside Live

2-5 p.m. Silver Birches Resort, Hawley. Until Aug. 31. Weather dependent. Check for cancellations on Facebook. Free. Info: 570-226-2124 or info@silverbirchesresortpa.com.

#### SATURDAYS & SUNDAYS

##### Music on the Lawn at the Milford Community House

1-3 p.m. Milford Community House, Milford. Through Aug. 31. Live music from local artists. Bring chairs or blankets and enjoy an afternoon out in the lovely town of Milford. The shows are weather permitting. Free. Info: 570-296-8700.

## EVENTS

### SATURDAYS & SUNDAYS

#### Wallenpaupack Brewing Company Brewery Tours

Noon-6 p.m. Wallenpaupack Brewing Company, Hawley. Through Nov. 30. Step behind the scenes and discover where your favorite craft brews are made. Call to secure your spot or ask a beertender during your visit. Info: 570-390-7933 or [content@wallenpaupackbrewingco.com](mailto:content@wallenpaupackbrewingco.com).

### SUNDAYS

#### Milford Farmers' Market

10 a.m.-1 p.m. Historic Milford, 506 Broad St., Milford. Until Oct. 26. Stop by and shop for local goods. Rain or shine. Free. Info: [milfordmarketpa@gmail.com](mailto:milfordmarketpa@gmail.com).

### SUNDAYS

#### Blues, Brews and BBQ

Dinner: 5-9 p.m.; Music: 6-9 p.m. Glass - Wine.Bar.Kitchen, Hawley. Through Aug. 31. A la carte menu with BBQ specials and a featured craft brew from Runaway Train Brewery, plus live blues music. Info: 570-226-1337 or [info@ledgeshotel.com](mailto:info@ledgeshotel.com).

## August 1-31

### THROUGH OCT. 1

#### Monster Trout Derby

100 brown, brook and rainbow trout between five and 10 pounds will be stocked in the Lackawaxen River between Hawley and the village of Lackawaxen. They are tagged with a number corresponding to the sponsoring business. Details: 570-685-2010 or [tworiveranglers@gmail.com](mailto:tworiveranglers@gmail.com).

### AUG. 1-9

#### 163rd Wayne County Fair

9 a.m. Wayne County Fairgrounds, Honesdale. Pay One Price. Midway & rides open Noon. Info: 570-253-2942 or 570-253-5486 or [waynecountyfair.com](http://waynecountyfair.com).

### AUG. 2, 16, 23, 30

#### Pocono Express Excursion

3 p.m. Honesdale Station, Honesdale. Info: 570-470-2697 or [info@thetourbridgeline.net](mailto:info@thetourbridgeline.net) or [thetourbridgeline.net](http://thetourbridgeline.net).

### AUG. 3, 24, 31

#### Dinner & Theater Train Excursion

Noon. Honesdale Station, Honesdale. Info: 570-470-2697 or [info@thetourbridgeline.net](mailto:info@thetourbridgeline.net) or [thetourbridgeline.net](http://thetourbridgeline.net).

### AUG. 3, 24, 31

#### Pocono Express & Theater Only Excursion

Noon. Honesdale Station, Honesdale. Info: 570-470-2697 or [info@thetourbridgeline.net](mailto:info@thetourbridgeline.net) or [thetourbridgeline.net](http://thetourbridgeline.net).

### AUG. 4-9

#### Carbon County Fair

Carbon County Fairgrounds, Palmerton. Info: 610-824-6570 or [carboncountyfair.com](http://carboncountyfair.com).

### AUG. 4-9

#### 59th Annual Tioga County Fair

Tioga County Fairgrounds, Whitneyville. Isaac Cole & High Street, Aug. 8. Info: 570-537-3196 or [tiogacountyfair.com](http://tiogacountyfair.com) or [tiogacountyfair@yahoo.com](mailto:tiogacountyfair@yahoo.com).

### AUG. 4, 11, 18

#### Reading Rangers

10-11 a.m. Lower Pavilion at Grey Towers NHS, Milford. Program for kids ages 4-12 includes read-aloud stories focusing on environmentalism and conservation, followed by a craft activity, hike, or scavenger

hunt. Parents or guardians required to remain with children during this program. Info: [greytowers/events](mailto:greytowers/events).

### AUG. 6

#### Dinner Train Excursion

1 p.m. Honesdale Station, Honesdale. Info: 570-470-2697 or [info@thetourbridgeline.net](mailto:info@thetourbridgeline.net) or [thetourbridgeline.net](http://thetourbridgeline.net).

### AUG. 6, 13, 20, 27

#### Pocono Express Excursion

1 p.m. Honesdale Station, Honesdale. Info: 570-470-2697 or [info@thetourbridgeline.net](mailto:info@thetourbridgeline.net) or [thetourbridgeline.net](http://thetourbridgeline.net).

### AUG. 8

#### The Andrew Collins Trio

6 p.m. Harmony in the Woods, 19 Imagination Way, Hawley. Blending folk, newgrass, Celtic, and chamber music. Info: [hello@harmonyinthewoods.org](mailto:hello@harmonyinthewoods.org) or 570-503-6685.

### AUG. 8-10

#### Dare to Dream Jr.: A Disney Musical Revue

Ritz Company Playhouse, Hawley. Sunday matinee. Call for times. Ritz Bitz Players. Info: 570-226-9752 or [theritz@ritzplayhouse.com](mailto:theritz@ritzplayhouse.com).

### AUG. 9

#### CCC Day Run-Paddle Duathlon

8-10 a.m. Promised Land State Park, Day Use/Main Beach, Route 390, Greentown. Athletes will run or walk a 5k and then paddle for 1 mile in their kayak, SUP, or canoe. Info: [friendschairplsp@gmail.com](mailto:friendschairplsp@gmail.com).

### AUG. 9

#### Leave a Zucchini on Your Neighbor's Porch Day

10 a.m.-2 p.m. Newfoundland Farm Market, 994 Main St., Newfoundland. Have fun perusing All Things Zucchini. No rain date. Free parking. Info: Facebook page or [gardeningjones@yahoo.com](mailto:gardeningjones@yahoo.com).

### AUG. 9

#### Photography (water drops)

10:30 a.m.-Noon. Art Factory of White Mills, White Mills. Workshop with artist Bill Brown. Bring camera with macro lens. All materials included. Pre-registration required. Info: 570-251-1181 or [info@theartfactoryofwhitemills.com](mailto:info@theartfactoryofwhitemills.com).

### AUG. 9

#### Abstract Alcohol Ink

10:30 a.m.-Noon. Art Factory of White Mills, White Mills. Workshop with artist Rosellyn Grohol. All materials included. Pre-registration required. Info: 570-251-1181 or [info@theartfactoryofwhitemills.com](mailto:info@theartfactoryofwhitemills.com).

### AUG. 9

#### Pocono Express Excursion

Noon. Honesdale Station, Honesdale. Info: 570-470-2697 or [info@thetourbridgeline.net](mailto:info@thetourbridgeline.net) or [thetourbridgeline.net](http://thetourbridgeline.net).

### AUG. 9

#### Alcohol Ink Markers

12:30-2 p.m. Art Factory of White Mills, White Mills. Workshop with artist Rosellyn Grohol. All materials included. Pre-registration required. Info: 570-251-1181 or [info@theartfactoryofwhitemills.com](mailto:info@theartfactoryofwhitemills.com).

### AUG. 9

#### Geology & Fossil Adventure Hike

1-3 p.m. Pocono Environmental Education Center, Dingmans Ferry. Take a hike on the Fossil Trail with Paul Kovalski, aka Dr. Dinosaur, and discuss the geology of our area and what makes PEEC's park unique. Call to register. Info: 570-828-2319 or [peec@peec.org](http://peec@peec.org).

## EVENTS

### **AUG. 9**

#### **Summer Sounds - Andre Turan**

2-5 p.m. Three Hammers Winery, Hawley. An acoustic performance on the grounds of the winery. Info: 570-949-4688 or info@threehammerswinery.com.

### **AUG. 9**

#### **Tunes & Tastings Excursion**

2 p.m. Honesdale Station, Honesdale. Info: 570-470-2697 or info@thetourbridgeline.net or thetourbridgeline.net.

### **AUG. 9**

#### **Acrylic Painting (top of the trail)**

2:30-4 p.m. Art Factory of White Mills, White Mills. Workshop with artist Rosellyn Grohol. All materials included. Pre-registration required. Info: 570-251-1181 or info@theartfactoryofwhitemills.com.

### **AUG. 9**

#### **Doolin'**

6 p.m. Dorflinger-Suydam Wildlife Sanctuary, White Mills. Wildflower Concert Series. Irish Folk Pop from France's premier Celtic band. Info: dorflinger.org or 570-253-5500.

### **AUG. 9**

#### **Home Again: a Tribute to the Music of Carole King**

6 p.m. Harmony in the Woods, 19 Imagination Way, Hawley. Celebrates Carole King's timeless songs. Concert benefits the Delaware Highlands Conservancy. Info: hello@harmonyinthewoods.org or 570-503-6685.

### **AUG. 9**

#### **The Great Train Robbery Run Excursion**

6 p.m. Honesdale Station, Honesdale. Info: 570-470-2697 or info@thetourbridgeline.net or thetourbridgeline.net.

### **AUG. 9**

#### **Rooftop Music**

6-9 p.m. Hotel Anthracite, Carbondale. Be on the rooftop for live music with Meet Me on Marcie. Food and drinks available for purchase. Info: 570-536-6020 or info@hotelanthracite.com.

### **AUG. 9**

#### **Full Moon Night Hike**

8-9:30 p.m. Pocono Environmental Education Center, Dingmans Ferry. An evening stroll in the light of the Sturgeon Moon. Learn about the moon and its phases, as well as other astrological events. Call to register. Info: 570-828-2319 or peec@peec.org.

### **AUG. 9-10**

#### **Civil War Encampment**

10 a.m. Akenac Park, Route 739, Dingmans Ferry. Pres. Lincoln will be there Sat., and read the Gettysburg Address. Includes a larger number of troops and some cavalry. Musket & cannon fire, drilling, hospital demos & more. A replica of a civil war drum will be raffled off. Food & beverages available for purchase. Museum will be open both days for touring. Free. Rain or shine. Info: dghistorical1735@gmail.com or dingmansferryhistoricalsociety.org.

### **AUG. 9-10**

#### **Historic Joel Hill Sawmill & Antique Machinery Demonstration**

Sat., 10 a.m. & 1 p.m.; Sun., 1 p.m. 736 Duck Harbor Road (off Rt. 191), Equinunk. Open House at the water-powered, Civil-War-Era Joel Hill Sawmill. Volunteers give demo tours of the sawmill and the Thomas Cleveland Museum, which houses late 19th Century tools and industrial machinery. The mill and museum are

located off PA Route 191. Follow GPS or directional signs. Free. Info: equinunkhistory.com/events or 570-798-2420.

### **AUG. 10**

#### **Fishing for Beginners**

9 a.m.-Noon. Pocono Environmental Education Center, Dingmans Ferry. There are plenty of fish waiting to be caught in PEEC's ponds. Spend the morning learning some of the basics for fishing with a rod and reel and see how many you can get. Strictly catch and release. Participants over 16 must have a valid fishing license. Call to register. Info: 570-828-2319 or peec@peec.org.

### **AUG. 10**

#### **Watercolor (grassland)**

10:30 a.m.-Noon. Art Factory of White Mills, White Mills. Workshop with artist Rosellyn Grohol. All materials included. Pre-registration required. Info: 570-251-1181 or info@theartfactoryofwhitemills.com.

### **AUG. 10**

#### **Pastels (abstract)**

12:30-2 p.m. Art Factory of White Mills, White Mills. Workshop with artist Rosellyn Grohol. All materials included. Pre-registration required. Info: 570-251-1181 or info@theartfactoryofwhitemills.com.

### **AUG. 10, 24**

#### **Bethel School Open House**

1-4 p.m. Bethel School, Honesdale. Join the Wayne County Historical Society and Museum for a special program at one of the few remaining one-room school-houses in Wayne County. Light refreshments served. Free. Info: 570-253-3240 or kalogna@waynehistorypa.com.

### **AUG. 10**

#### **Pocono Express Excursion**

1 p.m., 4 p.m. Honesdale Station, Honesdale. Info: 570-470-2697 or info@thetourbridgeline.net or thetourbridgeline.net.

### **AUG. 10**

#### **House of Hamill**

3 p.m. Grey Towers National Historic Site, Milford. Celtic group from Philly. Free. Info: kindredspir@yahoo.com or 570-390-8699 (voice/text).

### **AUG. 10**

#### **Free Ice Cream Social at Historic Grey Towers**

3-6 p.m. Grey Towers National Historic Site, Milford. Celebrate Gifford Pinchot's birthday with their traditional ice cream social. Stroll the grounds, enjoy free ice cream, then enjoy the music of House of Hamill or create original Smokey Bear masks. Free. Info: 570-491-7306 or info@greytowers.org.

### **AUG. 10**

#### **Deluxe Dinner Train Excursion**

4 p.m. Honesdale Station, Honesdale. Info: 570-470-2697 or info@thetourbridgeline.net or thetourbridgeline.net.

### **AUG. 11-16**

#### **167th Harford Fair**

Harford Fairgrounds, Harford. Info: 570-434-4300 or harfordfair.com or hfair@nep.net.

### **AUG. 13, 20, 27**

#### **Hobo Lunch Train Excursion**

1 p.m. Honesdale Station, Honesdale. Info: 570-470-2697 or info@thetourbridgeline.net or thetourbridgeline.net.

## EVENTS

### **AUG. 14**

#### **"Pop-up" (Picasso sunflower)**

6:30-8 p.m. Art Factory of White Mills, White Mills. Workshop with artist Rosellyn Grohol. All materials included. Pre-registration required. Info: 570-251-1181 or info@heartfactoryofwhitemills.com.

### **AUG. 14, 28**

#### **Senior Gathering**

1:30-3:30 p.m. The Cooperage, Honesdale. Welcoming afternoons designed to bring older adults (60+) together in a warm and friendly setting. Light refreshments, engaging conversation, and curated programming in the heart of your community. Info: 570-253-2020 or thecooperageproject.org.

### **AUG. 14, 28**

#### **Mobile Market at The Cooperage**

3-5 p.m. The Cooperage, Honesdale. Offers better access to fresh local produce, meats and dairy for seniors and others in the community who want great local food. In the pocket park in front of the Cooperage. Info: 570-253-2020 or thecooperageproject.org.

### **AUG. 15**

#### **Kaira Ba**

6 p.m. Harmony in the Woods, 19 Imagination Way, Hawley. Vibrant fusion of West African rhythms, soaring vocals, and electrifying grooves. Info: hello@harmonyinthewoods.org or 570-503-6685.

### **AUG. 15-17**

#### **Dare to Dream Jr.: A Disney Musical Revue**

Ritz Company Playhouse, Hawley. Sunday matinee. Call for times. Ritz Bitz Players. Info: 570-226-9752 or theritz@ritzplayhouse.com.

### **AUG. 15-22**

#### **Pocono Fiber Arts Camp**

Pocono Environmental Education Center, Dingmans Ferry. Quilters of all skill levels are welcome to a week of fabric fun. This year's activities include: refining machine quilting skills using the book "WALK" as a text, reimagining vintage textiles, and faced machine applique. There will be 1 & 2 day sessions so participants may choose which days they plan to attend. Call to register. Info: 570-828-2319 or peec@peec.org.

### **AUG. 16**

#### **Edible and Medicinal Plant Walk**

10 a.m.-Noon. Pocono Environmental Education Center, Dingmans Ferry. Join the Botanical Hiker, Heather Houskeeper, in discovering the many edible and medicinal plants that inhabit our region. Bring a notepad or use your phone to jot down notes. No collecting will be done in the park. Call to register. Info: 570-828-2319 or peec@peec.org.

### **AUG. 16**

#### **Wayne County Farmers' Market 50th Anniversary Festival**

10 a.m.-2 p.m. Next to Dave's Super Duper grocery store, Honesdale. Commemorate the continuous operation of the market since 1975 with a free festival. Live music, delicious food, kids' activities, and filled with local flavor, community spirit, and fun for all ages. Regular vendors joined by an array of displays, activities, and demos from over 15 local organizations. Free. Info: 570-488-5435.

### **AUG. 16**

#### **Canal Festival at D&H Canal Park at Lock 31**

10 a.m.-4 p.m. D&H Canal Park at Lock 31, 179 Texas Palmyra Highway, Hawley. Featuring live music from the canal era, Native American music, guided walking tours on the towpath, quilting, blacksmithing, weav-

ing, and other historical exhibits and demos. Children can participate in a history passport activity and an archaeological dig. Visit the canal store, enjoy some food, and a bake sale. Free. Info: 570-253-3240 or kalogna@waynehistorypa.com.

### **AUG. 16**

#### **Photography (floral shots)**

10:30 a.m.-Noon. Art Factory of White Mills, White Mills. Workshop with artist Bill Brown. Bring camera with standard kit lens, macro lens optional. All materials included. Pre-registration required. Info: 570-251-1181 or info@heartfactoryofwhitemills.com.

### **AUG. 16**

#### **Tunes Along the Towpath**

Noon. Music at 1 p.m. Banks of the Lackawaxen River, 495 Towpath Road, Hawley. Family-friendly event. Soft drinks, burgers, hot dogs, and snacks available on-site for purchase. Live music provided by Reverend Jefferson (Jefferson Airplane) and The Peach Project. Benefits the Pike County Historical Society. BYOB, blankets, lawn chairs, and coolers are welcome. Info: 570-296-8126 or pikemuse@ptd.net.

### **AUG. 16**

#### **Abstract Watercolor**

1-2:30 p.m. Art Factory of White Mills, White Mills. Workshop with artist Chrissie Kozlowski. All materials included. Pre-registration required. Info: 570-251-1181 or info@heartfactoryofwhitemills.com.

### **AUG. 16**

#### **Pond Paddle**

1-3 p.m. Pocono Environmental Education Center, Dingmans Ferry. Join PEEC for a paddle around their ponds. Beginners are welcome -- they teach you everything you need to know. Dress appropriately; you may get wet. Call in advance to reserve a boat. Info: 570-828-2319 or peec@peec.org.

### **AUG. 16**

#### **Summer Sounds - Marc Von Em**

2-5 p.m. Three Hammers Winery, Hawley. An acoustic performance on the grounds of the winery. Info: 570-949-4688 or info@threehammerswinery.com.

### **AUG. 16**

#### **Marianne Solivan Quartet**

5:30 p.m. Grey Towers N.H.S., Milford. Popular NYC-based singer and an instrumental trio offer a varied repertoire of jazz and Latin. Info: kindredspir@yahoo.com or 570-390-8699 (voice/text).

### **AUG. 16**

#### **Aubrey Logan**

6 pm. Dorflinger-Suydam Wildlife Sanctuary, White Mills. Wildflower Concert Series. Singer, songwriter, trombonist. Info: dorflinger.org or 570-253-5500.

### **AUG. 16**

#### **New York City's Premier ABBA Tribute - Mamma Mania!**

6 p.m. Harmony in the Woods, 19 Imagination Way, Hawley. Electrifying tribute delivers pure nostalgia and non-stop fun. Info: 570-503-6685 or hello@harmonyinthewoods.org.

### **AUG. 16**

#### **Farm to Table Dinner**

6-8 p.m. Pocono Environmental Education Center, Dingmans Ferry. Enjoy summer's bounty with this dinner featuring local produce perfect for the season. Payment required at registration. Space is limited -- call early to register. Info: 570-828-2319 or peec@peec.org.

## EVENTS

### **AUG. 17**

#### **Ecozone Discovery Room!**

1-4 p.m. Pocono Environmental Education Center, Dingmans Ferry. Climb into a bald eagle's nest, crawl into a bat cave, explore a beaver lodge, and dig in a fossil pit. Explore this indoor discovery room and enjoy hands-on exhibits on natural history, sustainability and the local environment. No registration required. Info: 570-828-2319 or [peec@peec.org](mailto:peec@peec.org).

### **AUG. 17**

#### **Pocono Express Excursion**

1 p.m., 5 p.m. Honesdale Station, Honesdale. Info: 570-470-2697 or [info@thetourbridgeline.net](mailto:info@thetourbridgeline.net) or [thetourbridgeline.net](http://thetourbridgeline.net).

### **AUG. 17**

#### **Deluxe Dinner Train Excursion**

5 p.m. Honesdale Station, Honesdale. Info: 570-470-2697 or [info@thetourbridgeline.net](mailto:info@thetourbridgeline.net) or [thetourbridgeline.net](http://thetourbridgeline.net).

### **AUG. 17**

#### **NEPA Philharmonic Presents: Regina Sayles & Summer Strings**

5:30 p.m. Harmony in the Woods, 19 Imagination Way, Hawley. Unique blend of folk, rock, and pop favorites alongside Sayle's original work. A WVIA benefit concert. Info: 570-503-6685 or [hello@harmonyinthewoods.org](mailto:hello@harmonyinthewoods.org) or .

### **AUG. 17**

#### **Beaver Ecology Hike**

7-8:30 p.m. Pocono Environmental Education Center, Dingmans Ferry. Learn about these charismatic critters and explore PEEC's indoor beaver lodge replica, then hit the trail to see the current beaver activity on campus. All ages welcome. Please call to register. Info: 570-828-2319 or [peec@peec.org](mailto:peec@peec.org).

### **AUG. 17-23**

#### **Annual West End Fair**

2-10 p.m. Gilbert, Monroe County. Info: 610-681-4293 or [thewestendfair.com](http://thewestendfair.com) or [secwefa@ptd.net](mailto:secwefa@ptd.net).

### **AUG. 21**

#### **Conservation Conversations \*FREE Virtual Event\***

5:30-6:30 p.m. Delaware Highlands Conservancy. Join the Conservancy's land protection coordinators for a free Zoom gathering to learn about DHC and how they can help you protect your land. Following a brief presentation, you will be invited to join the conversation and get your questions answered. Zoom meeting details will be provided after registration. Info: 570-226-3164 or [rachel@delawarehighlands.org](mailto:rachel@delawarehighlands.org).

### **AUG. 22**

#### **Wallenpaupack Historical Society Book Sale**

10 a.m.-2 p.m. Lake Wallenpaupack visitors' center, Hawley. The Historical Society is offering books on the rich history of the lake and surrounding area. Stop by to browse the collection and speak with a local historian. Free.

### **AUG. 22**

#### **Tyler Reese Tritt**

6 p.m. Harmony in the Woods, 19 Imagination Way, Hawley. Blending classic country roots with a modern edge. Info: [hello@harmonyinthewoods.org](mailto:hello@harmonyinthewoods.org) or 570-503-6685.

### **AUG. 22-24**

#### **Wally Lake Fest**

Various locations along Lake Wallenpaupack, Hawley. Shuttle service available. Info: 570-226-3191 or [northernpoconos.org](http://northernpoconos.org) or [wallylakefest@northernpoconos.org](mailto:wallylakefest@northernpoconos.org).

### **AUG. 22-24**

#### **[title of show]**

Ritz Company Playhouse, Hawley. Sunday matinee. Call for times. Musical. Info: 570-226-9752 or [theritz@ritzplayhouse.com](http://theritz@ritzplayhouse.com).

### **AUG. 22-31**

#### **Greene Dreher Sterling Community Fair**

Fairgrounds, Newfoundland. Info: 570-676-4047 or [gdgsfair.org](http://gdgsfair.org) or [info@gdsfair.org](mailto:info@gdsfair.org).

### **AUG. 23**

#### **Flower Cut and Design Workshop at Willow Wisp Organic Farm**

9-11 a.m. Willow Wisp Organic Farm, Damascus. Begin with coffee, then a tour of the flower fields. Learn best practices growing cut flowers and tips on post-harvest methods. Wear your farm boots. Bring clippers or scissors and a vase or vessel to bring your bouquet home. Light refreshments served. Info: 917-566-7698 or [tannis@farmartscollective.org](mailto:tannis@farmartscollective.org).

### **AUG. 23**

#### **Old Stone Jail Open House**

10 a.m.-1 p.m. Old Stone Jail, 10th & Court St. Honesdale. Stand in the same spot as some of the jail's most notorious occupants, hear true tales taken from local newspaper accounts, & learn about the jail's history, including jailbreaks, hangings, and even the birth of a baby girl. Free. Info: 570-253-3240 or [kalogna@waynehistorypa.com](mailto:kalogna@waynehistorypa.com).

### **AUG. 23**

#### **Angel Day**

10 a.m.-2 p.m. Newfoundland Farm Market, 994 Main St., Newfoundland. Participating vendors will offer angel-themed items. Also, watch the FB page for a very special announcement. Rain or shine. Free parking. Info: Facebook page or [gardenjones@yahoo.com](mailto:gardenjones@yahoo.com).

### **AUG. 23**

#### **Fishing for Beginners**

1-4 p.m. Pocono Environmental Education Center, Dingmans Ferry. There are plenty of fish waiting to be caught in PEEC's ponds. Spend the morning learning some of the basics for fishing with a rod and reel and see how many you can get. Strictly catch and release. Participants over 16 must have a valid fishing license. Call to register. Info: 570-828-2319 or [peec@peec.org](mailto:peec@peec.org).

### **AUG. 23**

#### **Summer Sounds - Brian Gieger**

2-5 p.m. Three Hammers Winery, Hawley. An acoustic performance on the grounds of the winery. Info: 570-949-4688 or [info@threehammerswinery.com](mailto:info@threehammerswinery.com).

### **AUG. 23**

#### **Wine & Cheese Experience Excursion**

3 p.m. Honesdale Station, Honesdale. Info: 570-470-2697 or [info@thetourbridgeline.net](mailto:info@thetourbridgeline.net) or [thetourbridgeline.net](http://thetourbridgeline.net).

### **AUG. 23**

#### **Driftwood**

6 p.m. Harmony in the Woods, 19 Imagination Way, Hawley. Blending bluegrass, Americana, and rock. Info: [hello@harmonyinthewoods.org](mailto:hello@harmonyinthewoods.org) or 570-503-6685.

### **AUG. 23**

#### **A Contra Dance**

7:30-10 p.m. The Cooperage, Honesdale. All are welcome to dance along to live music performed by Cherry Orchard and others, no experience necessary. Caller Laurie B. will do a beginner lesson starting at 7:15. Beginners are most welcome. Contra dance is a folk

## EVENTS

dance made up of long lines of couples.  
Info: 570-253-2020 or [thecooperageproject.org](http://thecooperageproject.org).

### AUG. 23-24

#### The Pocono State Craft Festival

10 a.m.-5 p.m. Quiet Valley Living Historical Farm, Stroudsburg. PA Guild of Craftsmen.  
Info: 570-992-6161 or [poconocrafts.com](http://poconocrafts.com) or [poconocraftshow@gmail.com](mailto:poconocraftshow@gmail.com).

### AUG. 23-24

#### Wally Lake Fest Artisan Craft Fair

10 a.m.-5 p.m. Hawley Silk Mill, Hawley. Open-air market and indoor shopping experience, part of Wally Lake Fest with artisans, crafters, local food and a bakery sale. Sat., High Noon Seltzer Bar at Cocoon Coffeehouse. Info: 570-226-6130.

### AUG. 24

#### Bug Exploration

1-3 p.m. Pocono Environmental Education Center, Dingmans Ferry. Bugs are everywhere. Come join PEEC and go exploring to find as many as possible. Please call to register. Info: 570-828-2319 or [peec@peec.org](mailto:peec@peec.org).

### AUG. 24

#### Rising Notes: A Youth Music Circle

1-3 p.m. Stoneworks Youth Center (behind The Cooperage), Honesdale. For 8-18 year olds. An informal, friendly atmosphere where young instrumentalists can enjoy playing for and with each other. Bring your own instruments. There is no pressure to perform. Free. Info: 570-253-2020 or [thecooperageproject.org](http://thecooperageproject.org).

### AUG. 24

#### Owl Prowl

7-8:30 p.m. Pocono Environmental Education Center, Dingmans Ferry. PA is home to a number of different species of owls. There are a handful of different species that live around PEEC. You may not find any, but you'll definitely hear them. Call to register. Info: 570-828-2319 or [peec@peec.org](mailto:peec@peec.org).

### AUG. 26

#### Mystery Zoom \*Free\*

Noon-1 p.m. Delaware Highlands Conservancy. Engage with them each week on social media to try and guess the theme based on clues and questions they share. Each Zoom covers a different topic, so see if your guess was right. And if the topic sparks your interest, stick around and learn something new. Zoom meeting details will be emailed to you after registration. Info: 570-226-3164 or [rachel@delawarehighlands.org](mailto:rachel@delawarehighlands.org).

### AUG. 27-31

#### 173rd Annual Sullivan County Fair

Sullivan County Fairgrounds, Forksville. Info: 570-924-3205 or [sullivancountyfair.org](http://sullivancountyfair.org).

### AUG. 27-SEPT. 1

#### Wyoming County Fair

Meshoppen, Wyoming County. Kameron Marlowe, Aug. 30, 7:30 p.m. Info: [wyomingcountyfair.com](http://wyomingcountyfair.com).

### AUG. 29

#### Anat Fort Quartet

6 p.m. Harmony in the Woods, 19 Imagination Way, Hawley. Acclaimed pianist leads a dynamic quartet in a heartfelt jazz tribute to Paula Roos.  
Info: [hello@harmonyinthewoods.org](mailto:hello@harmonyinthewoods.org) or 570-503-6685.

### AUG. 29

#### The Cooperage Project's 13th Birthday Bash!

6-9 p.m. The Cooperage, Honesdale. As the summer

winds down, you're invited to an unforgettable gathering filled with joy, reflection, and a look at the impact made together. Info: 570-253-2020 or [thecooperageproject.org](http://thecooperageproject.org).

### AUG. 29-31

#### [title of show]

Ritz Company Playhouse, Hawley. Sunday matinee. Call for times. Musical. Info: 570-226-9752 or [theritz@ritzplayhouse.com](mailto:theritz@ritzplayhouse.com).

### AUG. 29-SEPT. 1

#### La Festa Italiana

Courthouse Square, Scranton. Labor Day weekend. Food, music, entertainment. Info: 570-499-1534 or [lafestaitaliana.org](http://lafestaitaliana.org).

### AUG. 29-SEPT. 1

#### Labor Day Family Camp Weekend

Pocono Environmental Education Center, Dingmans Ferry. Experience the best of what PEEC has to offer. Interpretive hikes, animal presentations, canoeing, campfire and more. Includes 3 nights lodging & meals from Fri. dinner-Mon. lunch. Commuter & day rates available. Info: 570-828-2319 or [peec@peec.org](mailto:peec@peec.org).

### AUG. 30

#### Community Yard Sale

9 a.m.-4 p.m. D&H Canal Park at Lock 31, 179 Texas Palmyra Highway, Hawley. Many local non-profits will have plenty of treasures for you to look through and claim as your own. Great prices, bargains, and some snacks too. Free. Info: 570-253-3240 or [kalogna@waynehistorypa.com](mailto:kalogna@waynehistorypa.com).

### AUG. 30

#### Discovery Walk

10 a.m.-Noon. Van Scott Nature Reserve of the Delaware Highlands Conservancy, Beach Lake. Hike through the Reserve, exploring the outdoors and discovering the wonders of the ecosystem. Be prepared to walk on sloped terrain, & wear closed-toe shoes & clothes for the weather. Advance registration requested. Appropriate for all ages. Info: 570-226-3164 or [rachel@delawarehighlands.org](mailto:rachel@delawarehighlands.org).

### AUG. 30

#### Summer Sounds - Rick Horvath

2-5 p.m. Three Hammers Winery, Hawley. An acoustic performance on the grounds of the winery.  
Info: 570-949-4688 or [info@threehammerswinery.com](mailto:info@threehammerswinery.com).

### AUG. 30

#### Pasture Walks at Two Creek Farm

Starting at 3 p.m. Two Creek Farm, Lakewood. Immersive walking tour that brings regenerative & organic farming to life. Begins with an introduction to the principles of regenerative and organic agriculture. Then explore the working farm where these methods thrive in action. Family-friendly event; children under 15 attend for free. Info: 646-483-3285 or [info@twocreek.net](mailto:info@twocreek.net).

### AUG. 30

#### The Seven Wonders - Fleetwood Mac Tribute

6 p.m. Harmony in the Woods, 19 Imagination Way, Hawley. Stunning tribute to Fleetwood Mac and Stevie Nicks. Info: [hello@harmonyinthewoods.org](mailto:hello@harmonyinthewoods.org) or 570-503-6685.

### AUG. 31

#### Acrylic Pour

10:30 a.m.-Noon. Art Factory of White Mills, White Mills. Workshop with artist Cindy Davis. All materials included. Pre-registration required. Info: 570-251-1181 or [info@heartfactoryofwhitemills.com](mailto:info@heartfactoryofwhitemills.com).

# EVERYTHING YOU NEED TO POCO**KNOW**



Scan to watch now on  
[PoconoTelevision.com](http://PoconoTelevision.com)

Learn more about upcoming events at  
[PoconoMountains.com/Events](http://PoconoMountains.com/Events)



**PTN**  
POCONO TELEVISION NETWORK