

JUNE 2025

Since 1998

CONNECTIONS MAGAZINE

goodstuffconnections.com

INSIDE:
LIVE SUMMER
MUSIC

2025

HONESDALE ROOTS & RHYTHM

Music Festival

JUNE 21st

MAIN STAGE LINEUP

FLATFOOT SAM

JOHN NEMETH

LAID BACK COUNTRY PICKER

LITTLE RED ROOSTER BAND

VANESE THOMAS

SCAN FOR
MORE INFO



THIS PROJECT
IS SUPPORTED
IN PART BY THE



NATIONAL
ENDOWMENT for the **ARTS**
arts.gov



HonesdaleRootsAndRhythm.com



HonesdaleRootsAndRhythm

Free Summer Concerts – 2025

Cosponsors:  The Dime Bank – IGA – Pocono Mountain Visitors Bureau



St. Paul's Lutheran Church
401 Church St.
Hawley, PA 18428
(570) 226-2411

June 7 April Mae and the June Bugs
April Mae – Catfish Dave – Tony Mascara

June 14 Classical Piano & Cello
Tomoko Kuhn – Evelyn Juong

June 21 Violin & Guitar
Lyla Yeckley & Liam Platt

June 28 Ekat and friends
Ekat – Dave Figura – Mike Miller

July 5 The Good News Travelin' Band
Brian and Donna Miller

July 12 Classical Piano, Flute and Violin
Tomoko Kuhn – Koaki Shinkai – Lori Abbott

July 19 The Original Mixed Company
Dan McNichol – Jeff Chambers – Moses Young – John Romano

July 26 The Clazzical Saxophone Quartet
Bill Keil – Don Castellow – Jude Paster – Tim Pletcher

August 2 Callicoon Station & Pleasant Noise
Don Castellow – Elizabeth Rose – Jim Lownes – Brewster Smith

August 9 Acoustic Global Progressive
Oakwife Olenka – DJ Terry

August 16 Keyboard, Bass and Vocals
Tomoko and David Kuhn

All concerts on Saturdays at 1:00 PM - Indoors

MOTIVATED BUILDER says,
"It's time to finish River's Edge Community!"



Don't miss being one of the last 3 LUCKY 'NEW NEIGHBORS' to be welcomed into RIVER'S EDGE!

ONLY 3 BEAUTIFUL 2-STORY UNITS LEFT!

Move In Ready! Many Upgrades Included!
HUGE \$70,000 Price Reduction Incentive!

**A GORGEOUS 55+
ACTIVE ADULT COMMUNITY!
PREMIER LOCATION!
NEAR HISTORIC MILFORD, PA!**

**MAIN BEDROOM SUITE
ON 1ST FLOOR!**

**STUNNING
FULL SERVICE
CLUBHOUSE!**

**LOW TAXES
NO PA TAX
ON PENSIONS &
RETIREMENT PLANS**

HURRY, DON'T WAIT!

Now's your chance to make
the beautiful *River's Edge*
Community your home.

Call 570-296-8881 Today!

RIVERSEGE55.COM

Cash Buyers Preferred.

*No mortgage contingency. No contingency
on selling current home accepted.*





CONNECT

JUNE 2025

FEATURES

6 **R&R HEADLINER – JOHN NÉMETH**

As a teenager in the early '90s growing up in the muddy potato fields of Idaho, John Németh was drawn to the hard-edged hip hop sounds and rock bands of the day, until a friend, Tom Moore, introduced him to the Junior Wells and Buddy Guy classic "Hoodoo Man Blues."

8 **MUSIC IN THE PARK**

One of the things that makes music such a compelling part of our lives is how it connects the past, present, and future. The sounds we remember so fondly from our younger days are constantly being enriched by new and diverse forms of musical expression.

10 **WCAA ARTISTS' STUDIO TOUR**

The Wayne County Arts Alliance is excited to invite all to attend our 2025 WCAA Artists' Studio Tour on July 11, 12, 13 at eighteen studio locations around Wayne County plus our tour headquarters at our WCAA Gallery, 959 Main St. Honesdale.

COLUMNS

5 WORDS FROM THE TEAM

12 DISASTER BLASTER

14 LIVING GREEN

16 MRS. DOGOOD

18 BOOK REVIEW

20 MONEY

22 POCONO SECRETS

24 EVENTS

CONNECTIONS Magazine

president • publisher • editor in chief

deborah bailey

production manager

meica drake

editorial correction services

kay marks

contributing writers

michael krupa, *Finance*

terri schlichenmeyer, *Book Review*

la guzda, *Pocono Secrets*

pike/wayne conservation partnership, *Living Green*

disaster blaster, *Home Tips*

mrs. dogood, *Letters*

CONNECTIONS Magazine

3305 Lake Ariel Highway

Honesdale, PA 18431

570.647.0085 • Fax 570.647.0086

cmag@ptd.net • thinkconnections@yahoo.com

www.connections-magazine.com

Connections Magazine is not responsible for typographical errors, mistakes or misprints. All advertising, including photographs, is the property of Connections Magazine and not that of the advertiser. The advertiser has purchased the right of reproduction only in Connections Magazine and does not have the right to reproduce the ads in any other place or publication. Connections Magazine reserves its rights to exercise its discretion in the selection of advertisements.

© COPYRIGHT 2017 CONNECTIONS MAGAZINE



WHAT A DILEMMA

To laugh is to risk appearing a fool.
To weep is to risk appearing sentimental.
To reach out for another is to risk involvement.

To expose feelings is to risk rejection.

To place your visions before the
crowd is to risk ridicule.

To love is to risk not being loved in return.

****To go forward in the face of
overwhelming odds is to risk failure.**

But risks must be taken, because the
greatest hazard in life is to risk nothing.

The person who risks nothing, does nothing,
has nothing, is nothing.

We may avoid suffering and sorrow, but we
cannot learn, feel, change, grow,
love or know GOD.

Chained by our own self-assurances, we
are a slave. We have forfeited our freedom.

**Only the person who dares to take risks and
to trust in their GOD will ever be made FREE.**

In 1997, Rev. Edwin E. Bailey, father of the editor, gave this poem to his daughter 8 days before he had a stroke and 3 weeks before he died. The poem was adapted from works by Leo Buscaglia. Edwin hand wrote this on a scrap of paper and gave it to his daughter, Deborah, saying the words, "Someday you'll understand these words and use them. God bless sweetheart." **These words were used in making the decision to purchase Connections Magazine in 2002.

CONNECTIONS COPYRIGHTED 2007

“Music is the divine way
to tell beautiful, poetic
things to the heart.”

– Pablo Casals

Headline your June with great music! Sway through the month and all of summer to the tunes of Roots & Rhythm, Music in the Park, and Harmony in the Woods concerts.

The arts will be in full swing all summer long. Add a little color with the WCAA Artists' Studio Tour coming in July with local artists like Susan Cottle Alberto, Patricia Blauth, Burton Bulles, Elizabeth Castellano, and so many more. Add some hometown theatre at the Ritz in Hawley with shows like Kiss Me, Kate and Dare to Dream. *Get connected* for summer performances on page 11.

This summer marks the 30th Annual Delaware River Sojourn. Not only is this the Sojourn's thirtieth year, but a special event is planned to celebrate the Delaware River's designation as Pennsylvania's River of the Year! *Get connected* on page 14.

Sunshine, good vibes, and long days. Enjoy summer right here in your own backyard!

The CM Team
570.647.0085
cmag@ptd.net





*Headliner Set for Honesdale Roots &
Rhythm Music & Arts Festival – June 21st*

John Németh

As a teenager in the early '90s growing up in the muddy potato fields of Idaho, John Németh was drawn to the hard-edged hip hop sounds and rock bands of the day, until a friend, Tom Moore, introduced him to the Junior Wells and Buddy Guy classic "Hoodoo Man Blues."

Together they formed Fat John & the 3 Slims, which is still regarded as a legendary band in the Boise region. John played harp and sang in local bands, often opening the show for nationally touring blues acts and quickly caught the ear of established blues musicians. It didn't take long before he was releasing his own recordings, "The Jack Of Harps" (2002) and "Come And Get It" (2004), featuring Junior Watson, and performing in Junior Watson's band.

John relocated to San Francisco in 2004, where he had the bitter-sweet good fortune to undertake a two-year stint with Anson Funderburgh and the Rockets, filling in for the ailing Sam Myers. Németh immersed himself in the deep musical waters of the Bay area, absorbing more of the soul and funk grooves of what he calls “the early East Bay Grease sound” of San Francisco and Oakland bands.

John’s talents did not go unnoticed, and he soon signed a recording contract with Blind Pig Records. His national debut for that label, “Magic Touch” (2007), produced by Anson Funderburgh and featuring Junior Watson on guitar, received an ecstatic response from fans and the media, and he was hailed as the new voice of the blues. Living Blues enthused, “Magic Touch gives hope that the blues will survive.” In 2008 Németh was recruited by Elvin Bishop to do some performances and contribute four vocal tracks to his Grammy-nominated album “The Blues Rolls On.”

Németh released two more albums on the Blind Pig label, “Love Me Tonight” (2009) & “Name The Day (2010), both hitting #6 on the Billboard Blues Chart, and beginning his long string of Blues Music Award (BMA) nominations, numbering 20 at last count. John has also won two Blues Blast Music Awards – Best New Artist Debut Recording and Sean Costello Rising Star Award. John followed up with two independently released live albums in 2012, “Blues Live” and “Soul Live.”

In 2013 John relocated to Memphis, Tennessee, where he teamed up with

producer Scott Bomar and his classic Memphis Soul band, the Bo-Keys, to create an album of revisited soul classics, “Memphis Grease” (2014 Blue Corn), which debuted at #4 on the Billboard Blues Chart.

John won the 2104 BMA for Best Soul Blues Male Artist, followed by “Memphis Grease” winning Best Soul Blues Album in 2015.

In 2017 Németh released “Feelin’ Freaky” (produced by Luther Dickinson) on his own

Memphis Grease label, crushing all barriers of style and genre with an album of original songs that defied all the usual pigeonholes,

drawing from his strong influences in blues and R&B, as well as contemporary sounds in hip hop and rock ‘n’ roll. Later that same year, Németh was part of a side project “The Love Light Orchestra Featuring John Németh” recorded live at one of Memphis’ favorite watering holes, Bar DKDC. The 10-piece band was initially envisioned by guitarist Joe Restivo, vocalist John Németh and arranger/trumpeter Marc Franklin.

Németh returned to Electraphonic in December of 2019 with his seasoned road band of young gun players, The Blue Dreamers, featuring 19 year-old guitar phenom from Philadelphia, Jon Hay, drummer Danny Banks and Matt Wilson on bass for a rowdy southern swamp roots session resulting in his 10th album, “Stronger Than Strong” demonstrating, yet again, his uncanny ability to skillfully blend retro and modern blues and soul into compelling music that is simultaneously old and new.





Music in the Park

2025 PARK CONCERTS TO MIX TRADITION, INNOVATION

One of the things that makes music such a compelling part of our lives is how it connects the past, present, and future. The sounds we remember so fondly from our younger days are constantly being enriched by new and diverse forms of musical expression. For 2025, the members of the Wayne County Creative Arts Council (WCCAC) are pleased and excited to present a summer-long lineup of performers designed to showcase both the old and the new. It's the 58th Annual Festival of Park Events, it's free, and you're invited!

The festival concerts will take place in Honesdale's Central Park, beginning at 7:30 PM each Monday and Thursday evening from June 16 through July 23rd. Some evenings will actually begin at 7 PM with special appearances by outstanding music students from our area.

It all starts on a harmonious note on Monday evening, June 16, with our local barbershop chorale, the Honesdale Harmonizers. They'll share the evening with the enchanting and timelessly apPEALing Highland Handbells. These groups have delighted our festivalgoers for years, and we're sure this year will be no exception.

Thursday, June 19, the Lighten Up! Band - Randy and Rose Light and some of their friends - will raise our spirits with some infectious tunes drawn from folk to rock to country, and delivered with high positive energy.

Another time-honored tradition at the Festival of Events is a performance by our community chorus, the Wayne Choralaires. Their presentations combine the sacred and the secular, the classical and the modern. Come hear their selec-

tions for this year on Monday evening, June 23.

Thursday, June 26, our first new artist for this year will make their debut. Kellogg's Classic Country Band is already a local favorite, playing frequently at local venues like "R Place" in Hamlin and the "Totem Pole Inn" near Lake Ariel. Like the name says, they specialize in classic country, so whip out those lariat ties and boot-scootin' boots!

There will be no Monday night concert on June 30. Instead, on Tuesday night July 1, we will bring you this year's Independence Day celebration. Headliners will include the Doug Smith Band beginning at 6:30 PM, with the Crystal Band from Scranton at 8 PM, and of course the fireworks display sponsored by the Greater Honesdale Partnership around 9:30 PM. As always, there will be food and novelty vendors aplenty around the park, and patriotic fun for the whole family!

Thursday night, July 3, we'll follow up on the celebration with a night full of horns as the Brass Roots debut in the park! Relive the thrills provided by groups like Chicago and Blood, Sweat, and Tears!

The debuts keep on coming on Monday night, July 7, with the "original and funky blues" of the Outcrops, followed on Thursday July 10 by new and classic pop from the Wannabees.

Cruising down the home stretch, we'll have some smooth jazz and pop from Ekat and Friends on Monday, July 14, and Gram Baxtr's high-energy classic rock on Thursday, July 17. The Luongos return on July 21 with their popular stage show, and the award-winning Old Time Fiddlers will hold a seminar on the fiddle music of Appalachia and elsewhere on Thursday, July 24. The Fabulous 45s will wrap it up with a great collection of classic rock on Monday, July 28.

If any concerts get cancelled due to weather, we've set aside three nights - July 27, 29, and 30 - for second chances!

For more information, check out our web page at honesdaleparkevents.org!



ARTISTS' STUDIO TOUR

19 WAYNE COUNTY LOCATIONS
FRIDAY-SUNDAY
11, 12, 13 JULY 2025
10AM-6PM
FREE TO THE PUBLIC
MAP AND DETAILS AT
WAYNECOUNTYARTSALLIANCE.ORG

WAYNE COUNTY
WC
QA
ARTS ALLIANCE

Nancy Polunak



FUN & LEARNING

ONLY \$25

Get a **FREE** door hanger with our **"NEW" 3 BOOK GIFT SET!**

Add a coloring book for only **\$5**

ORDER NOW for quick delivery. Pickup also available!

FOLLOW US ON FACEBOOK
@ farm animals adventure series

A FARM ANIMALS' ADVENTURE SERIES

Gift Set

For the love of rescued animals ♥ with books that keep on giving

Call 570-251-1512 or email bonfiremediausa@gmail.com to order your gift set.
Gift Set not available on Amazon.com. New Amazon price for individual books now offered.

WAYNE COUNTY



ARTS ALLIANCE

Artists' Studio Tour

The Wayne County Arts Alliance is excited to invite all to attend our 2025 WCAA Artists' Studio Tour on July 11, 12, 13 at eighteen studio locations around Wayne County plus our tour headquarters at our WCAA Gallery, 959 Main St. Honesdale. Free and open to the public July 11, 12, 13, 10 AM - 6 PM each day. The tour preview exhibit at our WCAA Gallery opens June 20 with an artist reception 5-8 PM. Join us to see a sneak preview of artwork from each of this year's tour artists at the WCAA Gallery, 959 Main Street, Honesdale.

This is our 22nd Artists' Studio Tour. The tour provides an opportunity to meet Wayne County's established and emerging artists in their studios. Something for everyone! Paintings, ceramics, sculpture, glass, photography, multi-media and more original artwork of all kinds. The tour preview exhibit at 959 Main Street will also be open for three weeks prior to the tour, beginning June 20 – gallery hours are Thursday-Sunday 11am-4pm.

Our Studio Tour artists for 2025 are: Susan Cottle Alberto, Patricia Blauth, Burton Bulles, Elizabeth Castellano, Phyllis Chekenian, Denis Folz, Chelsea Herron, Heather Hogan-Spencer, Beth Ellen Johnson, Nancy Lopez, Hana Marritz, Linda Murphy, Nancy Palubniak, Victor Salib, Michael Sergi, Ellen Silberlicht, James Spencer, Kevin Storms, Raul Vega, and Bill Westmoreland. We encourage you to start your tour at the tour headquarters at our WCAA Gallery & Artisan Stop, 959 Main Street, Honesdale, where you can view a sample of art from each of our 20 tour artists and talk with our docents to help you plan your tour. Visit one or all 18 locations.

The Artists' Studio Tour is the premier event which was the catalyst for establishing the WCAA. The tour gives the public a rare opportunity to visit with some of the professional and emerging artists who call this area their home. Here is your chance to meet the artists and discuss their philosophies, inspiration and working techniques while viewing their most recent collections of artworks. And if you see something you want to own, take advantage of the artist's studio pricing. Don't miss this opportunity to visit Wayne County's diverse and talented artists right in their own studios.

Our 2025 WCAA studio tour brochure with map and detailed artist information is available at WCAA 959 Main Street, Honesdale, visitor's centers and other area businesses beginning in June, and online at waynecountyartsalliance.org.

RITZ



2025 SUMMER SEASON

EST. 1973



Kiss Me, Kate

MUSICAL

MUSIC & LYRICS BY
COLE PORTER

BOOK BY
SAM & BELLA SPEWACK

PRESENTED BY SPECIAL ARRANGEMENT WITH CONCORD
THEATRICALS ON BEHALF OF TAMS-WITMARK LLC

JULY 11, 12, 18, 19 • CURTAIN 8:00 PM
SUNDAY, JULY 13, 20 MATINEE ONLY • CURTAIN 2:30 PM

Move Over Mrs. Markham

COMEDY

COMEDY BY
RAY COONEY & JOHN CHAPMAN

JULY 25, 26, AUG 1, 2 • CURTAIN 8:00 PM
SUNDAY, JULY 27, AUG 3 MATINEE ONLY • CURTAIN 2:30 PM

RITZ BITZ
PLAYERS

DARE TO DREAM Jr.: *A Disney Musical Review*

BOOK DEVELOPED BY
DISNEY THEATRICAL
GROUP MUSIC

ADAPTED & ARRANGED BY
PATRICK SULKEN
ORCHESTRATIONS BY
PATRICK SULKEN

ADDITIONAL VOCAL
ARRANGEMENTS BY
BRITT BONNEY

AUG 8, 9, 15, 16 • CURTAIN 7:30 PM
SUNDAY, AUG 10, 17 MATINEE ONLY • CURTAIN 2:30 PM

[title of show]

MUSICAL

MUSIC & LYRICS BY
JEFF BOWEN

BOOK BY
HUNTER BELL

AUG 22, 23, 29, 30 • CURTAIN 8:00 PM
SUNDAY, AUG 24, 31 MATINEE ONLY • CURTAIN 2:30 PM

TICKETS ADULTS: \$20
SENIORS (65+) & STUDENTS: \$15
RITZ BITZ PRODUCTION: \$10

CONTACT BOX OFFICE: (570) 226 - 9752
WEBSITE: RITZPLAYHOUSE.COM
FACEBOOK: @RITZCOMPANYPLAYHOUSE
INSTAGRAM: @RITZPLAYHOUSE

STREET ADDRESS
512 KEYSTONE STREET, HAWLEY, PA 18428
MAILING ADDRESS
P.O. BOX 158, HAWLEY, PA 18428

THE RITZ RECEIVES STATE ARTS FUNDING SUPPORT THROUGH A GRANT FROM THE PENNSYLVANIA COUNCIL OF THE ARTS, A STATE AGENCY
FUNDED BY THE COMMONWEALTH OF PENNSYLVANIA AND THE NATIONAL ENDOWMENT FOR THE ARTS, A FEDERAL AGENCY.

Discovering **MOLD**

Uncovering the Hidden Threat

Provided by Disaster Blaster

{ Discovering a mold issue in your home can be an eerie feeling; not only are you discovering a mold issue that you had no idea was there, but the place where you feel the safest is suddenly a potential health hazard for you and your family. }

To make matters worse, mold often develops in areas where you may not notice it right away, such as under sinks, inside walls, or in attics or basements, so by the time you do discover the issue, the mold contamination can already be significant.

What Is Mold and Why Does It Grow?

Mold is a type of fungus that thrives in warm, moist, and humid environments. Unfortunately, the very climates we create to make our homes comfortable can also be ideal for mold growth. So when mold spores in the air settle in an area

with the right environment for growth, problems can easily develop inside our homes.

Since we already maintain our homes at temperatures conducive to mold growth, the only element that mold still needs for growth is a moisture source, but where can that come from? Some of the most common moisture issues that lead to mold growth include plumbing leaks, roof leaks, and humidity issues in basements, attics, and bathrooms. Even natural disasters such as floods can exacerbate the problem, leaving moisture trapped in walls, flooring, and furniture.

Signs of Mold in Your Home

One of the most challenging aspects of dealing with mold is that it can often remain hidden for months or even years. However, there are tell-tale signs to watch out for:

- **Musty Odor:** Mold often emits a damp, earthy smell. If you detect this odor, especially in enclosed spaces like basements, attics, or bathrooms, it may be a sign of hidden mold growth.
- **Visible Growth:** Mold can appear as black, green, blue, white, or brown spots or streaks on surfaces such as walls, ceilings, and grout lines.
- **Water Damage or Stains:** Discoloration on walls, ceilings, or floors could indicate moisture issues, which are breeding grounds for mold.
- **Health Symptoms:** Persistent allergic reactions such as sneezing, coughing, or itchy eyes, especially when indoors, could signal mold exposure.

The Health Risks of Mold

Mold isn't just an aesthetic issue; it poses significant health risks. Mold issues commonly trigger allergic reactions, asthma attacks, and other respiratory problems in those exposed to mold growth and its spores. Some studies have even linked long-term mold exposure to serious health conditions such as anxiety and depression, insomnia, fatigue, recurring infections, hair loss, and autoimmune issues!

People with weakened immune systems, children, and the elderly are particularly vulnerable. Some molds have been identified to produce mycotoxins that can affect occupants as well, and the full effects of exposure to these mycotoxins is still being understood.

What to Do if You Discover Mold

Discovering mold in your home can be overwhelming, but acting swiftly and effectively is crucial. Here's a step-by-step guide to tackling the issue:

Prevent Cross-Contamination

Mold issues can easily spread to, or contaminate, other parts of your home, so it's important to take steps to prevent accidental cross-contamination to areas that may not already be affected. Here are some tips to prevent cross-contamination:

- If it's believed that mold growth may exist inside wall cavities, opening up these cavities could create an opportunity for mold spores to contaminate other parts of your home. As a result, it's important to use caution when opening up or tearing out walls, ceilings, or floors where mold growth may be present. It's often recommended to consult with an expert that is qualified in mold remediation services.
- Don't move contents and furniture from the area if it may be contaminated with mold growth

or spores. This is actually a common cause for cross-contamination and can greatly complicate a mold issue. Carefully inspect any furniture or content items before moving them to another place in your home.

- Cleaning or spraying mold growth can cause mold spores to be released into the air where they have a higher potential of contaminating other areas of your home. As a result, it's recommended to consult a professional mold remediation company before attempting to clean a mold issue yourself.

Assess the Situation

It can be difficult to determine the extent of mold problems because issues often develop in areas you can't see, such as inside wall cavities or above ceilings. As a result, while you may attempt to assess the mold issue in your home, you may not recognize areas where hidden growth is likely or what potential cross-contamination risks may exist. In many cases, it is recommended to have a qualified mold remediation professional inspect your issue to assess these risks and develop a plan to address it effectively.

Address the Source of Moisture

Mold will continue to grow if the underlying moisture issue isn't resolved. Fix leaks, improve ventilation, and use dehumidifiers to control indoor humidity levels.

It's important to note that addressing the moisture issue alone will not resolve mold contamination problems, as the mold growth and spores will continue to impact the quality of your indoor air and your health.

Remove the Mold Growth and Spores

To properly address mold issues, removing the visible growth isn't enough; the spores must be addressed as well. A qualified mold remediation firm will contain the work area to prevent cross-contamination during the project, will remove building materials like drywall that may be contaminated with mold, detail clean any surfaces that are not removed, and filter mold spores out of the air.

Article continued on our website.



About Disaster Blaster – Disaster Blaster is an indoor environmental firm serving the Northeastern PA Area. We have been providing our local area with unparalleled infectious disease disinfection, water

damage mitigation, basement waterproofing, mold remediation, asbestos abatement, and radon mitigation services for decades, and are proud to have been named The World's Greatest Indoor Environmental Firm. For more about Disaster Blaster, as well as more helpful tips, please visit our website at: www.disasterblaster.com or call our office at (570) 963-1123.



living green

The 30th Annual **DELAWARE RIVER** **SOJOURN**

*Submitted by Kerry Engelhardt,
Resources and Land Use Specialist at the Upper Delaware Council*

This summer marks the 30th Annual Delaware River Sojourn. Not only is this the Sojourn's thirtieth year, but a special event is planned to celebrate the Delaware River's designation as Pennsylvania's River of the Year!

The Sojourn is a paddling and camping excursion where participants paddle a different section of the Delaware River each day and camp together at night. This year the Sojourn will take place over seven days, from Saturday June 14 to Friday June 20.

The paddling sections of the Upper Delaware River will be June 14 (Balls Eddy to Stockport), June 15 (Stockport to NEWE), and June 16 (NEWE to Callicoon). Participants can camp at the Northeast Wilderness Experience (NEWE) Campground located on the river in Equinunk, PA. From June 17th onwards, participants will journey further downstream, through the middle section of the river, camping at the Driftstone Campground in Mt. Bethel, PA. On Wednesday June 18, a River of the Year celebration will be held at Minisink Park in Smithfield Township.

Meals are provided each day, as well as evening programs about history, eco-



gy, and local issues. Boats are available to rent, or paddlers can bring their own. Participants can choose to camp with the Sojourn, find a local place to stay, or just join the paddling for the day. Experienced volunteers from the National Canoe Safety Patrol will be on hand to lead safety talks each day, and guide the group down the river, making sure that everyone enjoys the day safely and no one is left behind. It's a wonderful and unique way to experience the river.

Visit delawareriversojourn.com for the full schedule and more information, and to register. A ticket includes a guided river trip; kayak, life jacket & paddle rental; camping & meals; livery transport and shuttling (to get you and your boat between take-in/take-out and the campsite), and educational programming in the evenings. Paddlers of all experience levels and ages are welcome. Join us this year to discover why the Delaware River was named the PA River of the Year!

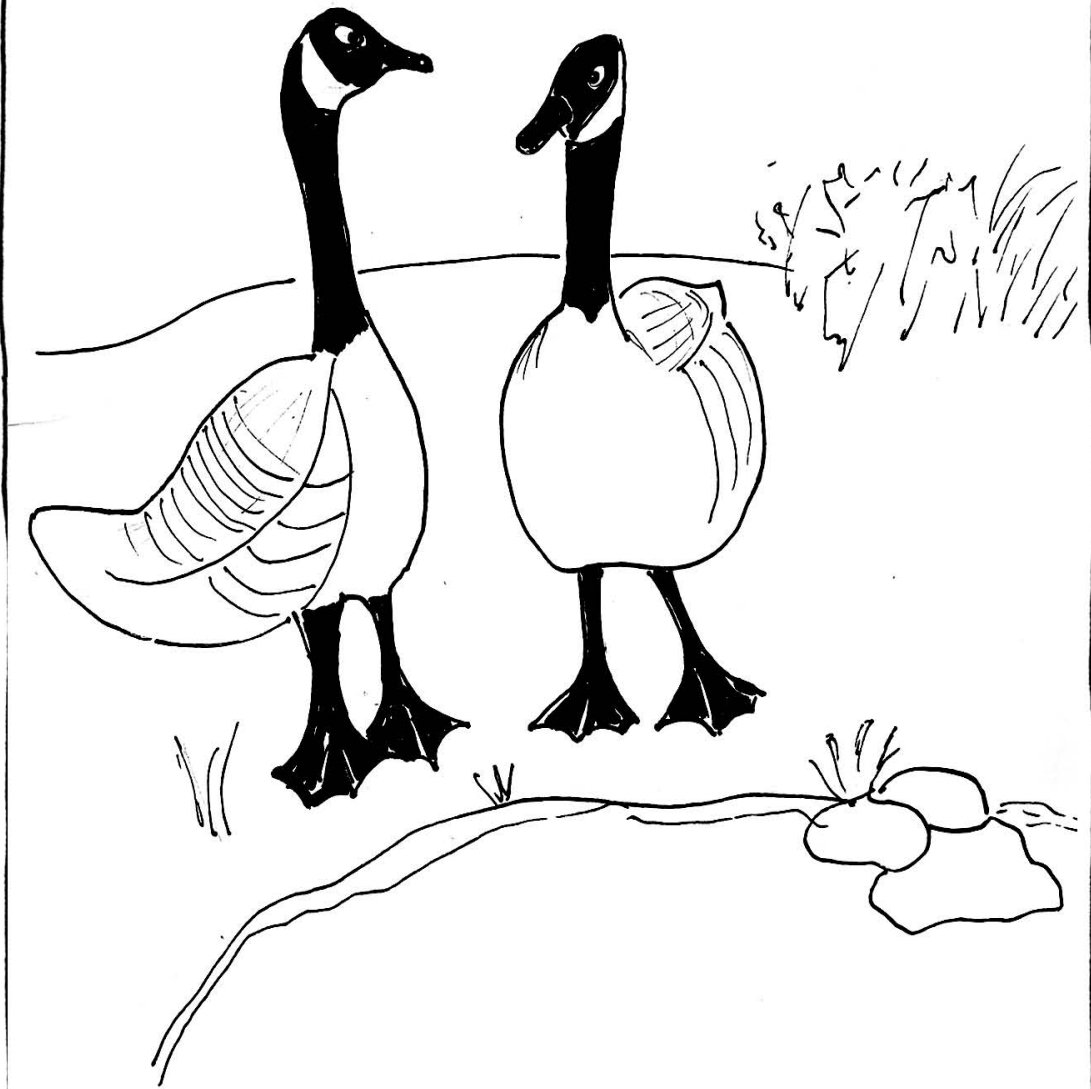
Kerry Engelhardt (kerry@upperdelawarecouncil.org) is the Resources and Land Use Specialist at the Upper Delaware Council (UDC). The UDC oversees a partnership of Federal, two States, and local governments to manage the 73.4-mile designated Upper Delaware Scenic and Recreational River. Visit us at www.upperdelawarecouncil.org, or find us on Instagram and Facebook.

58th Annual
SUMMER FESTIVAL OF EVENTS
Presented by Wayne County Creative Arts Council

FREE LIVE MUSIC
CENTRAL PARK • HONESDALE
MONDAYS & THURSDAYS 7:30 P.M.

Come as you are - Bring your blanket or chair - Prepare to relax and ENJOY!
No admittance fee - Free will donations will be accepted - Snacks available

MONDAY		THURSDAY	
June 16 Honesdale Harmonizers Highland Handbells	June 19 Lighten Up Americana Mix	INDEPENDENCE DAY CELEBRATION	
June 23 Wayne County Chorales	June 26 Kellogg's Classic Country Band Classic Country	<p>Tuesday, July 1st Fun begins at 6:30pm with vendors offering a variety of foods and novelties and Music in the Park.</p> <p>Doug Smith Band 6:30pm</p> <p>Crystal Band 8:00pm</p> <p>Food and novelty vendors</p> <p>Fireworks by the Greater Honesdale Partnership approx. 9:30pm</p> <p><i>Rain Date Wednesday, July 2nd</i></p>	
June 30 No Concert	July 3 Brass Roots Classic & Modern Horn Band	<p>Honesdale Women's Club Arts and Antique Show Wayne Highlands Middle School July 12th & 13th</p> <p><i>Come Enjoy the WAYNE COUNTY FAIR August 1st through 9th</i></p>	
July 7 The Outcrops Original Southern and Funky Blues	July 10 The Wanabees New and Classic Pop		
July 14 Ekst and Friends Mix of Pop, Rock, and Country	July 17 Gram Baxtr Modern Pop and Rock		
July 21 The Luongos Band Classic Pop and Rock	July 24 Old Time Fiddlers Country Fiddling		
July 28 The Fabulous 45's Classic Pop	July 27/29 Possible Rain Dates 7/30	<p>POCONO MOUNTAINS POCONO MOUNTAINS, PA VisitWayneCounty.com</p>	



SEASONS

By The Reverend Mrs. Silence DoGood

Dear Editor,

After Rebecca left the parsonage, I went to our home library with a cup of green tea to think about our meeting. I also took one of my homemade oatmeal cookies to eat. I never knew if I helped her or not until I heard from her after our meeting. Perhaps we will have a few words at our Sunday service.

Rebecca is a 29-year-old married woman. She and her husband have been desperately trying to have a baby for a few years with no success. I had never focused so diligently on a woman's unfulfilled desire to have a child until I began trying to help her. The whole mystery of the reproductive system came into my focus. When my husband Willie and I were planning a family, it was all very natural and easy. We had our two children without giving it much technical thought. But now with Rebecca I am even reading books on fertility.

A woman is fertile only six days a month, the five days before ovulation and the day itself. There is a definite season for the creation of life, and Rebecca and her husband Adam know the life cycle well and have been practicing it. The life cycle is about every twenty-eight days.

This loving couple has been experiencing profound faith and hope on a monthly basis. They have faith in biology and hope that their humanity will produce a child for them to love and raise. When both virtues fail, my task is to help them answer the question why.

To gain a different perspective I stood up and looked out the window. Our parsonage sits on top of a hill overlooking a half-acre pond which is about three acres down a steep hill below the house. There they were again. Every year in spring a couple of geese return to our pond to mate and to raise their goslings. There they were standing on our side of the pond facing each other. They were motionless. I wondered what was going on in their minds and hearts as they stood there gazing at each other. And then I realized that they were experiencing a season as well. The same clock that measures Rebecca and Adam's season was ticking for the geese, but they had a different season. An annual one.

I sat down with my philosophical thoughts. I began thinking of all the seasons that we experience. The four seasons that we weather in Penn-

sylvania. The seasons of good health and bad health. The seasons of being in and out of love. The season of having faith and hope and then the disappointment of having faith and hope fail us. And the ultimate seasons of life and death.

And then my mind began to question how we deal with the seasons in our lives. My thought was that our character is the bridge which carries us from season to season. Our personality has a foundation which is our character. Dealing with disappointments both big and small may be the key to the development of character. And it is our character which gives strength. Not receiving the gift we wanted. Not receiving the recognition which we thought we deserved. The imagined or wished for things that never happened give us the opportunity to grow. Maybe that's why we are born little so that we can learn from disappointments. Being born small gives us the time to develop character to weather the storms after a disappointment.

And then I thought about myself. I don't have one season in my life, I have many. I have those of my family and I also have those of my congregants. As the senior pastor of The First Church of God's Love in the bucolic farming village of Halo, Pennsylvania, I am intimately involved with my parishioners' lives. Their disappointments, their losses, their illnesses, and yes their deaths are mine. My ministry has taught me that character sustains us between the seasons that affect our lives.

Amen.



The Reverend Mrs. Silence DoGood

Senior Pastor

Executive Director

President

Chairman

Choir Master (part-time)

The First Church of God's Love

*Copyright © Bill Donnelly, 2025
All Rights Reserved.*

HAVE YOU HEAR ABOUT....?

Of course you have. It's been all over social media for months and if you didn't see it there, someone in your family said something about it or a friend did and you still think it's untrue. It's hard to fight nonsense, you know – although admittedly, it's fun to read those fake “science” reports. So get the new book “Pseudoscience” by Lydia Kang, MD and Nate Pedersen, go ahead, and indulge.

“It's okay to reserve judgment until the evidence is in.”

When he was asked for his “gut feeling” on subjects that are unknown, the great Carl Sagan usually answered with some version of those words. And, say Kang and Pedersen, “He's right.” Waiting for correct, valid confirmation of facts is much better than overreacting and sharing wrong information. Waiting, say the authors, is the best thing to do, even though “staking a claim” on information can make you “feel pretty good.”

Take, for instance, the idea that the Earth is flat. If you disagree with that, well, you're not alone: most flat-Earthers disagree with one another on various details. Either way you go, the authors invite you to build a rocket ship and check for yourself.

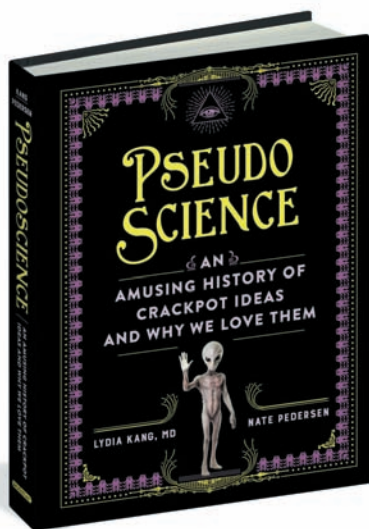
Hey, it's happened.

Spontaneous Human Combustion has a perfectly valid explanation. There's some medical truth in certain kinds of body divination, but most of it's hoey. Bumps on someone's skull are good indications of (are you ready for this?)... bumps on their skull. Seeing ghosts may have basis in medicine. Your birth month really has little to do

with your personality. Cryptids “have been reportedly seen but never with definitive proof.” The jury's still out on cryogenics but future successes are absolutely not guaranteed. Chickens can't tell the future, and neither can their entrails. And you can pretend to levitate but actually doing it? Nope.

Pseudoscience:

An Amusing History of Crackpot Ideas and Why We Love Them



By LydiaKang, MD and Nate Pedersen
Reviewed by Terri Schlichenmeyer

So, here's the thing about “Pseudoscience”: it's not going to change any minds. No matter how many times you show someone what's inside this book, it very likely won't make one bit of difference in anyone's logic, either way.

The appeal, instead, probably lies with someone who believes the truth and enjoys thinking about these “crackpot ideas” anyhow because, paraphrasing Sagan, judgment can be withheld and it's okay. It's even fun to read about that which authors Kang and Pedersen put to rest, once and for (maybe) all, and to think about the “but”s.

The other good news is that there are a lot of paranormal, weird, odd, unexplained events that

have happened around the world and throughout time that are not in “Pseudoscience.” That just means that there's plenty of room for enjoying other wild stories and ideas, still plenty of what-iffing, and giving your imagination a workout.

Keep in mind that “Pseudoscience” is not just for skeptics; it's full of answering chapters for doubters, but also for anyone who collects and loves conspiracy theories, and for your favorite smarty-pants. If you're curious with a streak of open-mindedness, open the covers and pick one to read about.



**HAWLEY PARKS AMPHITHEATER IN THE WOODS
WILL EXPAND YOUR EARS & ENRICH YOUR SOUL**

**2025 SUMMER CONCERT
TICKETS ON SALE**



July 4 – The Wildwoods
 July 5 – Americana Brass
 July 12 – Pete Muller & Kindred Souls
 July 18 – Laura Anglade & The Ben Rosenblum Quartet
 July 18 – Kaira Ba
 July 25 – The String Queens
 July 26 – Rhythm and Broadway
 August 1 – King Solomon Hicks
 August 8 – The Andrew Collins Trio
 August 9 – Home Again: A Tribute to Carole King
 August 16 – NYC's Premier ABBA Tribute: Mamma Mania!
 August 17 – Regina Sayles & Summer Strings
 August 22 – Tyler Reese Tritt
 August 23 – Driftwood
 August 29 – Anat Fort Quartet

HarmonyInTheWoods.org



Some things are
do-it-yourself.

Insurance isn't one of them.

With Olsommer-Clarke Insurance, you get lots of good stuff: answers to all your questions (even ones you didn't know you had as a homeowner), just the right coverage you need, and the promise of service that shines above the rest.



OLSOMMER-CLARKE

INSURANCE GROUP, INC.

Service that shines above the rest




HONESDALE • 1014 Church Street • 570-253-6330
HAMLIN • 610 Hamlin Hwy. • 570-689-9600
MOSCOW • 100 N. Main Street • 570-842-9600

TOLL FREE: 800-566-8999

OlsommerClarke.com

Creating an Investment Portfolio

Provided by Michael Krupa



You've identified your goals and done some basic research. You understand the difference between a stock and a bond. But how do you actually go about creating an investment portfolio? What specific investments are right for you? What resources are out there to help you with investment decisions? Do you need a financial professional to help you get started?

A good investment portfolio will spread your risk

It is an almost universally accepted concept that most portfolios should include a mix of investments, such as stocks, bonds, mutual funds, and other investment vehicles. A portfolio should also be balanced. That is, the portfolio should contain investments with varying levels and types of risk to help minimize the overall impact if one of the portfolio holdings declines significantly.

Many investors make the mistake of putting all their eggs in one basket. For example, if you invest in one stock, and that stock goes through the roof, a fortune can be made. On the other hand, that stock can lose all its value, resulting in a total loss of your investment. Spreading your investment over multiple asset classes should help reduce your risk of losing your entire investment. However, remember that there is no guarantee that any investment strategy will be successful and that all investing involves risk, including the possible loss of principal.

Asset allocation: How many eggs in which baskets?

Asset allocation is one of the first steps in creating a diversified investment portfolio. Asset allocation means deciding how your investment dollars should be allocated among broad investment classes, such as stocks, bonds, and cash alternatives. Rather than focusing on individual investments (such as which company's stock to buy), asset allocation approaches diversification from a more general viewpoint. For example, what percentage of your portfolio should be in stocks? The underlying principle is that different classes of investments have shown different rates of return and levels of price volatility over time. Also, since different asset classes often respond differently to the same news, your stocks may go down while your bonds go up, or vice versa. Though neither diversification nor asset allocation can guarantee a profit or ensure against a potential loss, diversifying your investments over various asset classes can help you try to minimize volatility and maximize potential return.

So, how do you choose the mix that's right for you? Countless resources are available to assist you, including interactive tools and sample allocation models. Most of these take into account a number of variables in suggesting an asset allocation strategy. Some of those factors are objective (e.g., your age, your financial resources, your time frame for investing, and your investment objectives). Others are more subjective, such as your tolerance for risk or your outlook on the economy. A financial professional can help you tailor an allocation mix to your needs.

More on diversification

Diversification isn't limited to asset allocation, either. Even within an investment class, different investments may offer different levels of volatility and potential return. For example, with the

stock portion of your portfolio, you might choose to balance higher-volatility stocks with those that have historically been more stable (though past performance is no guarantee of future results).

Because most mutual funds invest in dozens to hundreds of securities, including stocks, bonds, or other investment vehicles, purchasing shares in a mutual fund reduces your exposure to any one security. In addition to instant diversification, if the fund is actively managed, you get the benefit of a professional money manager making investment decisions on your behalf.

Note: Before investing in a mutual fund, carefully consider its investment objectives, risks, charges and expenses, which are outlined in the prospectus that is available from the fund. Obtain and read a fund's prospectus carefully before investing.

Choose investments that match your tolerance for risk

Your tolerance for risk is affected by several factors, including your objectives and goals, timeline(s) for using this money, life stage, personality, knowledge, other financial resources, and investment experience. You'll want to choose a mix of investments that has the potential to provide the highest possible return at the level of risk you feel comfortable with on an ongoing basis.

For that reason, an investment professional will normally ask you questions so that he or she can gauge your risk tolerance and then tailor a portfolio to your risk profile.

Investment professionals and advisors

A wealth of investment information is available if you want to do your own research before making investment decisions. However, many people aren't comfortable sifting through balance

sheets, profit-and-loss statements, and performance reports. Others just don't have the time, energy, or desire to do the kind of thorough analysis that marks a smart investor.

For these people, an investment advisor or professional can be invaluable. Investment advisors and professionals generally fall into three groups: stockbrokers, professional money managers, and financial planners. In choosing a financial professional, consider his or her legal responsibilities in selecting securities for you, how the individual or firm is compensated for its services, and whether an individual's qualifications and experience are well suited to your needs. Ask friends, family, and coworkers if they can recommend professionals whom they have used and worked with well. Ask for references and check with local and federal regulatory agencies to find out whether there have been any customer complaints or disciplinary actions against an individual in the past. Consider how well an individual listens to your goals, objectives, and concerns.

Stockbrokers

Stockbrokers work for brokerage houses, generally on commission. Though any investment recommendations they make are required by the SEC to be suitable for you as an investor, a broker may or may not be able to put together an overall financial plan for you, depending on his or her training and accreditation. Verify that an individual broker has the requisite skill and knowledge to assist you in your investment decisions.

Professional money managers

Professional money managers were once available only for extremely high net-worth individuals. But that has changed a bit now that competition for investment dollars has grown so much, due in part to the proliferation of discount brokers on the Internet. Now, many professional money managers have considerably lowered their initial investment requirements in an effort to attract more clients.

Article continued on our website.



Van Gorders' FURNITURE
BEAUTIFUL LAKE WALLENPAUPACK
Route 6 • 570-226-9726
HISTORIC DOWNTOWN HONESDALE
Church & 6th Sts. • 570-253-1860
CHARMING MILFORD
Route 2001 (Water St.) • 570-296-9610
VanGorders.com
Old Hickory Furniture Co. Sealy LA Z BOY



Michael Krupa
614 Church Street
Honesdale, PA 18431
570-253-0121
michaelkrupa@krupawm.com

Content Prepared by Broadridge Investor Communication Solutions, Inc. This information, developed by an independent third party, has been obtained from sources considered to be reliable, but Raymond James Financial Services, Inc. does not guarantee that the foregoing material is accurate or complete. This information is not a complete summary or statement of all available data necessary for making an investment decision and does not constitute a recommendation. Securities offered through Raymond James Financial Services, Inc., member FINRA/SIPC. Investment advisory services are offered through Raymond James Financial Services Advisors, Inc.

POCONO secrets

LUDOLPH HENSEL

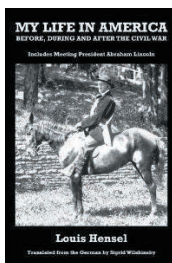
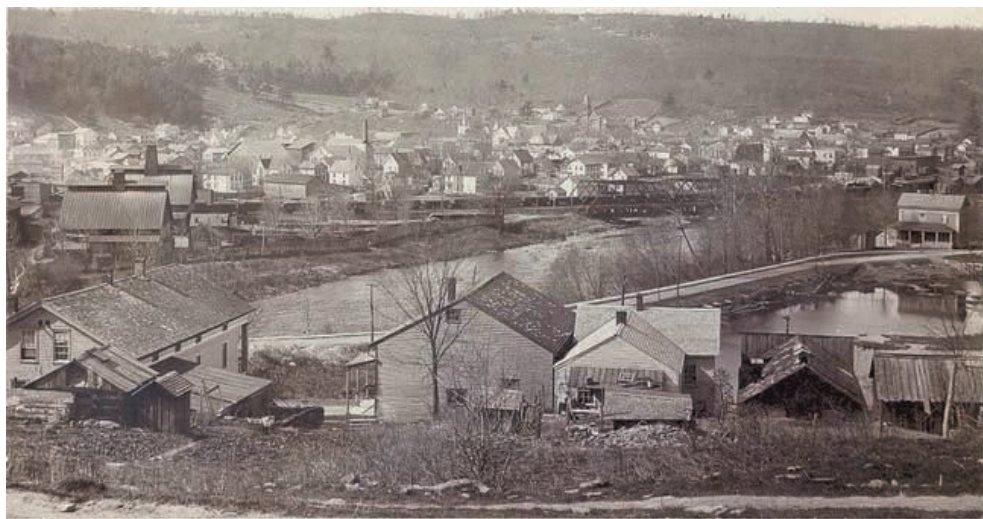
My Life in America Before,
During and After the Civil War

By LA Guzda

I have been working on a fictional history that revolves around the Shohola Train Wreck of 1864. (I will keep you informed on the progress.) The writers group PencilsNEPA has been a significant source of support. I've written about them in a previous article. If you are a writer or a would-be writer, I highly recommend this group of talented people. You can learn more about them at: <http://pencilsnepa.com/>

With a desire to expand my knowledge of the lifestyle of 1860s in Hawley, PA, I began searching for articles and books to educate me. That's when I accidentally stumbled upon one of the best books I've had the pleasure to read, Louis Hensel: My Life in America Before, During and After the Civil War.

Most of us in northeast Pennsylvania are familiar with Louis (Ludolph) Hensel Jr and his photo documentation of the area from the 1860s until his death in 1927. His photography captures the glass industry, the D&H Canal, as well as life in Hawley, Honesdale, Wilkes Barre, Scranton, Port Jervis and New York City. They are a visually stimulating account of life in our community from another



era. The Hawley library owns the rights to the glass plates of his photos. You can view them during library hours and can also order prints. <https://www.hawleylibrary.org/>

My Life in America Before, During and After the Civil War is a series of letters written by Louis (Ludolph) Hensel Senior to his granddaughter in Germany. Born in Germany in 1817, Ludolph led an extraordinary life. Not only did I learn a great deal about day to day living in the area during the mid-1860s, I learned what a colorful character this man was. The details of his life jump off the page as if you were there. He died in Hawley in 1908 at the age of 91.

Thanks to Sigrid Wilshinsky who translated his letters written in German, we have this personal account to enjoy. Louis Senior was a farmer, a horse doctor, an opera singer, and even a translator for local indigenous tribes. That is how he managed to meet Abraham Lincoln!

I highly recommend Hensel, Sr's book. His letters reflect his charm, humor,

imagination and love of life – especially as an American. I also recommend a stop by the Hawley library to view Hensel, Jr's beautiful photos. Those Hensel men have much to teach us.

Follow us on Instagram @PoconoSecrets and on Facebook @PocoPike
Visit www.LAGuzda.com or www.PoconoSecrets.com

Nature's Grace
HEALTH FOODS & DELI



Natural & Organic Foods

- Full line of supplements and vitamins •
- Gluten-free, Sugar-free, Non-dairy foods, Hoagies and Take-out lunches
- Fresh Juices •

947 Main Street, Honesdale, PA 18431
570.253.3469
www.naturesgrace.net

a+r+e

ARTS RECREATION ENTERTAINMENT

YOU CONNECTED

THE AREA'S GOOD STUFF

JUN '25

Ongoing Events

MONDAYS

Brewpub Bingo

6-8 p.m. Wallenpaupack Brewing Company, Hawley. Through Dec. 29. Free fun and the chance to win WBC prizes. Family-friendly event. Must be 21 to drink with ID. Free to play. Info: 570-390-7933 or content@wallenpaupackbrewingco.com.

THURSDAYS

Jazz Nights at Here & Now Brewing Company

6:30-9 p.m. Here & Now Brewing Company, Honesdale. Musical guests appear weekly and each week takes you on a different journey of sound. Free. Info: 570-253-0700 or info@hereandnowbrewing.com.

THURSDAYS

Trivia Night With B-Ray

6-8 p.m. Through Aug. 28. Wallenpaupack Brewing Company, Hawley. Flex your brainpower and gather your sharpest friends for a showdown with B-Ray Trivia. Team up to six. Stay tuned on social media for releases every Thursday. Info: 570-390-7933 or content@wallenpaupackbrewingco.com.

THURSDAYS-SATURDAYS

Maple Syrup Tasting on the Farm

11 a.m.-5 p.m. Pocono Mountain Maple, Newfoundland. Indulge in a tasting of all organic and kosher maple syrup flavors each with its signature taste. Visit the farm store café. Try a maple water tasting: all-natural hydrating electrolyte drink sourced directly from the maple trees. Info: 570-499-8974 or info@poconomtnmaple.com.

THURSDAYS-SUNDAYS

DENT: Art by Jeff George

11 a.m.-4 p.m. Wayne County Arts Alliance Gallery, Honesdale. Through Jun 14. Paintings, prints and sculpture illuminating Honesdale resident George's wide-ranging vision in a celebration of flora, fauna, letter forms, and graphic storytelling. Info: 570-729-5740 or waynecountyartsalliance@gmail.com.

THURSDAYS-SUNDAYS

Inspired By Song

11 a.m.-4 p.m. Wayne County Arts Alliance Gallery, Honesdale. Through Jun 14. Collaboration between the Yarnslingers and WCAA member artists who created an original artwork inspired by songs. Info: 570-729-5740 or waynecountyartsalliance@gmail.com.

FRIDAYS

Hawley Farmers' Market

2-5 p.m. Bingham Park, Hawley. Delicious fresh & local produce and more. All types of PA Preferred fresh & local produce in season. Items like microgreens, seasonal garden vegetables, cold brewed coffee, fresh eggs, meats, and fabulous baked goods. Rain or shine. Info: 570-226-1644 or hawleyfarmersmarket@gmail.com.

fee, fresh eggs, meats, and fabulous baked goods. Rain or shine. Info: 570-226-1644 or hawleyfarmersmarket@gmail.com.

FRIDAYS & SUNDAYS

Live Music at the Brewery

Fri., 5-8 p.m.; Sun., Noon-3 p.m. Until Dec. 28. Wallenpaupack Brewing Company, Hawley. Enjoy live tunes from NEPA and Tri-State artists while sipping on delicious brews. Free. Info: 570-390-7933 or content@wallenpaupackbrewingco.com.

FRIDAYS-MONDAYS

Public Tours at Grey Towers

Noon-3 p.m. Grey Towers National Historic Site, Milford. Through Nov. 2. The home of Gifford Pinchot, America's first forester and founder of the USDA Forest Service. Info: 570-296-9630 or greytowers@fs.fed.us.

SATURDAYS

Wayne County Farmers' Market

9:30 a.m.-12:30 p.m. Next to Dave's Super Duper grocery store, Honesdale. Through Oct. 25. Fresh and local produce. All types of PA Preferred fresh and local produce in season. Items like microgreens, seasonal garden vegetables, cold brewed coffee, fresh eggs, meats, and of course fabulous baked goods. Free. Info: 570-488-5435.

SATURDAYS

Newfoundland Farmers' and Artisans' Market

10 a.m.-2 p.m. 994 Main St., Newfoundland. Mid-May to Oct. Locally grown produce and local meats, fresh baked goods, small batch jams and jellies, hand painted artworks, candles, soaps, dog treats and jewelry; all made here by area farmers & artists and offered in a beautiful dog friendly park setting that includes walking trails and a playground. Free parking. Info: Facebook page or gardenjones@yahoo.com.

SATURDAYS & SUNDAYS

Lakeside Live

2-5 p.m. Silver Birches Resort, Hawley. Through Labor Day. Weather dependent. Check for cancellations on Facebook. Free. Info: 570-226-2124 or info@silverbirchesresortpa.com.

SATURDAYS & SUNDAYS

Music on the Lawn at the Milford Community House

1-3 p.m. Milford Community House, Milford. Through Jul. 13. Live music from local artists. Bring chairs or blankets and enjoy an afternoon out in the lovely town of Milford. The shows are weather permitting. Free. Info: 570-296-8700.

SATURDAYS & SUNDAYS

Wallenpaupack Brewing Company Brewery Tours

Noon-6 p.m. Wallenpaupack Brewing Company, Hawley. Through Nov. 30. Step behind the scenes

EVENTS

and discover where your favorite craft brews are made. Call to secure your spot or ask a beertender during your visit. Info: 570-390-7933 or content@wallenpaupackbrewingco.com.

SUNDAYS

Milford Farmers' Market

10 a.m.-1 p.m. Historic Milford, 506 Broad St., Milford. Through Oct. 26. Stop by and shop for local goods. Rain or shine. Free. Info: milfordmarketpa@gmail.com.

Jun. 1-30

THROUGH OCT. 1

Monster Trout Derby

100 brown, brook and rainbow trout between five and 10 pounds will be stocked in the Lackawaxen River between Hawley and the village of Lackawaxen. They are tagged with a number corresponding to the sponsoring business. Details: 570-685-2010 or tworiveranglers@gmail.com.

JUN. 1, 8, 29

Pocono Express

1 p.m. Honesdale Station, Honesdale. Info: 570-470-2697 or info@thetourbridgeline.net or thetourbridgeline.net.

JUN. 1, 8, 15, 29

Dinner Train

1 p.m. Honesdale Station, Honesdale. Info: 570-470-2697 or jhillier@thetourbridgeline.net or thetourbridgeline.net.

JUN. 5

Lucy Joseph

7-9 p.m. Farm Arts Collective, Damascus. Original performance based on the life of a 19th century gender non-conforming pioneer Lucy Ann/Joseph Israel Lobdell, the historical figure also known as The Female Hunter of Long Eddy, who lived in the Delaware River Valley in the mid 1800's. Info: 917-566-7698 or tannis@farmartscollective.org.

JUN. 6

2nd Annual Fork & Cork Dinner Party

6 p.m. cocktails, 7 p.m. dinner. Lacawac Sanctuary, Lake Ariel. Four-course fundraising dinner. Each course paired with handcrafted, small-batch wines from Three Hammers Winery. Live entertainment by Emma Dilemma and craft mixology by Melissa Decker. Benefits Lacawac Sanctuary. Info: 570-689-9494 or info@lacawac.org or lacawac.org.

JUN. 7

Arts and Crafts Fair in Bingham Park

9 a.m.-4 p.m. Bingham Park, Hawley. Fair hosts approx. 100 vendors with truly unique handcrafted items; creative and distinctive gift ideas for that special someone or yourself. Rain or shine. Free. Info: 570-226-3191 or chamber@northernpoconoschamber.com.

JUN. 7

Bug Exploration

10 a.m.-Noon. Pocono Environmental Education Center, Dingmans Ferry. Bugs are everywhere! Go exploring to find as many as possible. Don't worry, they won't bite or sting you. Call to register. Info: 570-828-2319 or peec@peec.org.

JUN. 7

Community Garden Volunteer Workday

10 a.m.-4 p.m. Van Scott Nature Reserve of the Delaware Highlands Conservancy, Beach Lake. This workday will focus on preparing the site for planting and community use for a new community garden space. Advance registration requested. Bring sun protection, insect repellent, and a refillable water bottle. Wear closed-toe shoes. Pack a lunch. Rain date Jun. 14. Info: 570-226-3164 ext. 2 or rachel@delawarehighlands.org.

JUN. 7

Alcohol Ink (4 tiles)

1-2:30 p.m. Art Factory of White Mills, White Mills. Workshop with artist Carol Lyons. All materials included. Pre-registration required. Info: 570-251-1181 or info@theartfactoryofwhitemills.com.

JUN. 7

Ecozone Discovery Room!

1-4 p.m. Pocono Environmental Education Center, Dingmans Ferry. Climb into a bald eagle's nest, crawl into a bat cave, explore a beaver lodge, and dig in a fossil pit. Explore this indoor discovery room and enjoy hands-on exhibits on natural history, sustainability and the local environment. No registration required. Info: 570-828-2319 or peec@peec.org.

JUN. 7

Summer Sounds - John Stanley

2-5 p.m. Three Hammers Winery, Hawley. An acoustic performance on the grounds of the winery. Info: 570-949-4688 or info@threehammerswinery.com.

JUN. 7

Wine & Cheese Experience

3 p.m. Honesdale Station, Honesdale. Info: 570-470-2697 or info@thetourbridgeline.net or thetourbridgeline.net.

JUN. 7, 28

Pocono Express

3 p.m. Honesdale Station, Honesdale. Info: 570-470-2697 or info@thetourbridgeline.net or thetourbridgeline.net.

JUN. 7

Drag Bingo - Pride 2025!

7-10 p.m. The Cooperage, Honesdale. Event is 18+ only. Join your dazzling hosts, Belle Pepper and Kay Gorgeous, for a joyful evening of laughter, celebration, and togetherness. BYOB. Info: 570-253-2020 or thecooperageproject.org.

JUN. 8

Fishing for Beginners

9 a.m.-Noon. Pocono Environmental Education Center, Dingmans Ferry. There are plenty of fish waiting to be caught in PEEC's ponds. Spend the morning learning some of the basics for fishing with a rod and reel and see how many you can get. Strictly catch and release. Participants over 16 must have a valid fishing license. Call to register. Info: 570-828-2319 or peec@peec.org.

JUN. 8

Watercolor (abstract)

10:30 a.m.-Noon. Art Factory of White Mills, White Mills. Workshop with artist Rosellyn Grohol. All

materials included. Pre-registration required. Info: 570-251-1181 or info@theartfactoryofwhitemills.com.

JUN. 8

Pastels (mountainside)

12:30-2 p.m. Art Factory of White Mills, White Mills. Workshop with artist Rosellyn Grohol. All materials included. Pre-registration required. Info: 570-251-1181 or info@theartfactoryofwhitemills.com.

JUN. 8

Bethel School Open House

1-4 p.m. Bethel School, Honesdale. Join the Wayne County Historical Society and Museum for a special program at one of the few remaining one-room schoolhouses in Wayne County. Light refreshments served. Free. Info: 570-253-3240 or kalogna@waynehistorypa.com.

JUN. 8

Nature at Night

8-9:30 p.m. Pocono Environmental Education Center, Dingmans Ferry. A pleasant summer evening is the perfect time to head outside. Take a walk in the woods to listen for owls, look at stars, and enjoy the music of the night. Enjoy fun activities that test your night vision. Bring a flashlight. Call to register. Info: 570-828-2319 or peec@peec.org.

JUN. 11, 18, 25

Life Appreciation

4-5:30 p.m. Wayne County Public Library, Honesdale. Life Appreciation is an enlivened discussion group welcoming all. Breathe, listen, and be renewed by thoughts that encourage love, joy, hope healing, and enthusiasm as we explore ancient wisdoms in reflections of our present conditions. Rev. Glenn of Trees of The Mission of The Laughing Heart. Contact Miles to register at 570-253-1220 or mkeesler@waynelibraries.org.

JUN. 13

Stopover Ecology of Landbird Migrants: Why It's Good to be Fat and Other Migratory Tales

10 a.m.-Noon. Van Scott Nature Reserve of the Delaware Highlands Conservancy, Beach Lake. Presentation on avian migration and research conducted in northeast Pennsylvania with Dr. Robert Smith and Dr. Meg Hatch. Kids under 12 free. Advance registration requested. Program will be outdoors. Info: 570-226-3164 ext. 2 or rachel@delawarehighlands.org.

JUN. 13

Wally Wine Fest Kick Off: Live Fire Game Dinner

7-9 p.m. The Settlers Inn, Hawley. Five-course wild game feast. Open-air woodland dining venue. Watch the chefs prepare the feast in the outdoor kitchen. Each course is paired with a fine wine from Trinchero Family Estates. Info: 570-226-2993 or desk@thesettlersinn.com.

JUN. 13-15

Wally Wine Fest

1-5 p.m. The Waterfront, Silver Birches Resort, Hawley. Indoor/outdoor lakeside event features over 100 domestic and international wines to sample and bottles to purchase. Shop the marketplace. Bid on the silent auction. Enjoy live music on two stages. Info: 570-226-4388 or info@silverbirchesresortpa.com.

JUN. 14

Spring Open House

9 a.m.-4:30 p.m. Lighthouse Harbor Marina, Greentown. Explore the spring boat show and sale, new boat rental fleet expo, boat sports cards, tiki boat charters, and more. Food, raffles and prizes. Free. Info: 570-857-0220 or info@poconoactionsports.com.

JUN. 14

Frogs, Salamanders, & More!

10 a.m.-Noon. Pocono Environmental Education Center, Dingmans Ferry. Join PEEC to explore nearby breeding pools for salamanders, frogs, and egg masses. PEEC provides nets and collection jars for gentle, up-close study. Wear boots and clothes that can get muddy or wet. Call to register. Info: 570-828-2319 or peec@peec.org.

JUN. 14

Plant and Place Connection

10 a.m.-Noon. Pocono Environmental Education Center, Dingmans Ferry. Join the Botanical Hiker, Heather Houskeeper, for a guided walk that utilizes aspects of forest bathing alongside education about edible & medicinal plants, as well as nature journaling. The intention of this program is to cultivate a relationship with the land. Call to register. Info: 570-828-2319 or peec@peec.org.

JUN. 14

Salute to Elvis

10 a.m.-2 p.m. 994 Main St., Newfoundland. Many Elvis-themed items and maybe a special guest at the Newfoundland Farmers' and Artisans' Market. Free parking. Rain date Jun 21. Info: Facebook page or gardeningjones@yahoo.com.

JUN. 14

Abstract Alcohol Ink

10:30 a.m.-Noon. Art Factory of White Mills, White Mills. Workshop with artist Rosellyn Grohol. All materials included. Pre-registration required. Info: 570-251-1181 or info@theartfactoryofwhitemills.com.

JUN. 14

Alcohol Ink Markers

12:30-2 p.m. Art Factory of White Mills, White Mills. Workshop with artist Rosellyn Grohol. All materials included. Pre-registration required. Info: 570-251-1181 or info@theartfactoryofwhitemills.com.

JUN. 14

Summer Sounds - Rob Viola

2-5 p.m. Three Hammers Winery, Hawley. An acoustic performance on the grounds of the winery. Info: 570-949-4688 or info@threehammerswinery.com.

JUN. 14

Acrylic Painting (mountain view)

2:30-4 p.m. Art Factory of White Mills, White Mills. Workshop with artist Rosellyn Grohol. All materials included. Pre-registration required. Info: 570-251-1181 or info@theartfactoryofwhitemills.com.

JUN. 14

Tunes & Tastings

3 p.m. Honesdale Station, Honesdale. Info: 570-470-2697 or info@thetourbridgeline.net or thetourbridgeline.net.

EVENTS

JUN. 14

Duo Mantar

5:30 p.m. Grey Towers N.H.S., Milford. Renowned guitarist Adam Levin & mandolinist Jacob Reuven, will offer a very broad range of music. Info: kindredspir@yahoo.com or 570-390-8699 (voice/text).

JUN. 14

Live Music by Mike Metzger

6-10 p.m. Ledges Hotel, Hawley. Dinner and drinks by the falls accompanied by live music. Reservations: 570-226-1337. Info: info@ledgeshotel.com.

JUN. 14

RiverVibes Concerts at The Cooperage:

Meghan Cary

7:30-9 p.m. The Cooperage, Honesdale. All ages welcome. BYOB. Info: 570-253-2020 or thecooperageproject.org.

JUN. 14, 15

Bubbly Brunch at The Settlers Inn

11:30 a.m.-2:30 p.m. The Settlers Inn, Hawley. Join The Settlers Inn for a Bubbly Brunch, part of Wally Wine Fest. Enjoy a tasting flight of bubbly wines, prix fixe menu and live music. Info: 570-226-2993 or desk@thesettlersinn.com.

JUN. 15

Father's Day Brunch at the French Manor

11 a.m.-2 p.m. French Manor Inn and Spa, Newfoundland. Request a table on the terrace for an amazing 30 plus mile view of the Northern Pocono Mountains. Info & reservations: 570-676-3244 or info@thefrenchmanor.com.

JUN. 16

Wayne Highlands Quilt Guild

4-6 p.m. First Presbyterian Church, Hawley. Do you love to quilt? We welcome you to join us & make new friends who share your passion for quilting. At each meeting there is a Show & Tell. At some meetings we have a hands-on learning presentation, sewing of an item to donate to charity or a speaker. For more info, call Deb at 908-358-2670 or debszoo@gmail.com.

JUN. 16

Honesdale Harmonizer and Highlander Handbells

7:30 p.m. Central Park, Honesdale. Wayne Cty. Creative Arts Council Summer Festival of Events. Bring a chair or blanket. Rain dates and locations will be posted on Facebook. Free. Info: WayneCreativeArts on Facebook.

JUN. 17

Rhythm & Spice at Sunset Pond

5:30-8:30 p.m. Himalayan Institute Retreat Center, Honesdale. Authentic Indian street food, handcrafted mocktails, live music by MDK Trio. Info: himalayaninstitute.org.

JUN. 19

"Pop-up" (VanGogh fish)

6:30-8 p.m. Art Factory of White Mills, White Mills. Workshop with artist Rosellyn Grohol. All materials included. Pre-registration required. Info: 570-251-1181 or info@theartfactoryofwhitemills.com.

JUN. 19

Annual Juneteenth Celebration

6-9 p.m. Farm Arts Collective, Damascus. Experience stories of race and courage in an unforgettable

evening of truth-telling, music, and memory. With readings, music, audience Q&A, and a celebratory sing-along, a surprise takeaway -- and a gift to remember. Info: 917-566-7698 or tannis@farmartscollective.org.

JUN. 19

Lighten Up

7:30 p.m. Central Park, Honesdale. Wayne Cty. Creative Arts Council Summer Festival of Events. Bring a chair or blanket. Rain dates and locations will be posted on Facebook. Free.

Info: WayneCreativeArts on Facebook.

JUN. 20

Classic Skynyrd Live

8 p.m. The Milford Theater & Performing Arts Center, Milford. Southern Steel pays tribute to the iconic band and its music. Table seating tickets include a cocktail server (credit card required) during the show. The Milford Theater bar will be open one hour before the show, serving wine, beer, cocktails and concessions. Info: 570-300-5990 or marketing@milfordhospitalitygroup.com.

JUN. 20-22

Milford Music Festival

Downtown Milford. Music lines the main streets of the borough, and stores open their doors for an indoor/outdoor musical shopping experience. Free. Info: milfordmusicfest@gmail.com.

JUN. 21

SRCP Presents "A Summer Hike at the Bog Trail"

10 a.m. Camp Spears YMCA, Dingmans Ferry. Nature lovers of all experience levels are invited to join the Scenic Rural Character Preservation Program (SRCP). Hike along the Bog Trail to discover amazing fauna in the glacial bog. Wear proper footwear. Bring a water bottle. Registration required: bit.ly/summerhikeinpike. Free. Info: 570-828-2329.

JUN. 21

Edible and Medicinal Plant Walk

10 a.m.-Noon. Pocono Environmental Education Center, Dingmans Ferry. Join the Botanical Hiker, Heather Houskeeper, in discovering the many edible and medicinal plants that inhabit our region. Heather will share tips for positive identification, methods for sustainable harvest, and practical ways to work with these plants for food and medicine. No collecting will be done in the park. Call to register. Info: 570-828-2319 or peec@peec.org.

JUN. 21

Electric City Flower Show

10 a.m.-4 p.m. Nay Aug Park, Scranton. Free family fun day out featuring over 70 vendors, food trucks, flower and photography competitions, free entrance to the Everhart Museum, kids' activities, live music, and more. Info: electriccityflowershow.webadore.com or Facebook.

JUN. 21

Honesdale Roots & Rhythm

10 a.m. Central Park, Honesdale & locations along Main Street. Spend the morning and early afternoon listening to live bands downtown. Main stage acts start about noon: John Nemeth, Vaneese Thomas, Little Red Rooster Blues Band, Flatfoot Sam & the Educated Fools, Laid Back Country Picker. Artisans and food vendors. Free parking throughout town all day. Info: honedalerootsandrhythm.com.

JUN. 21**Roots, Rhythm & Rails**

Noon. Honesdale Station, Honesdale.

Info: 570-470-2697 or info@thestourbridgeline.net or thestourbridgeline.net.

JUN. 21**Geology Hike**

1-3 p.m. Pocono Environmental Education Center, Dingmans Ferry. Take a hike on the Fossil Trail with Paul Kovalski, aka Dr. Dinosaur, and discuss the geology of our area and what makes the park unique. Call to register. Info: 570-828-2319 or peec@peec.org.

JUN. 21**Summer Sounds - Rick Horvath**

2-5 p.m. Three Hammers Winery, Hawley. An acoustic performance on the grounds of the winery. Info: 570-949-4688 or info@threehammerswinery.com.

JUN. 21**Forage: Edible and Medicinal Plant Walk with Heather Houskeeper**

2:30-5:30 p.m. Van Scott Nature Reserve of the Delaware Highlands Conservancy, Beach Lake. Join herbalist Houskeeper in exploring the wild edible and medicinal plants that inhabit the landscape. This program consists of a walk through the rolling fields of the Reserve. Dress appropriately with sun protection and shoes for walking. Bring water and snacks as needed. Program best suited for adults. Info: 570-226-3164 ext. 2 or rachel@delawarehighlands.org.

JUN. 22**Murder Mystery Limited**

1 p.m. Honesdale Station, Honesdale.

Info: 570-470-2697 or info@thestourbridgeline.net or thestourbridgeline.net.

JUN. 22**Frogs, Salamanders, & More!**

1-3 p.m. Pocono Environmental Education Center, Dingmans Ferry. Spend the afternoon with PEEC at their ponds and streams. Learn about some amphibious friends as you gently catch and release these slimy critters. Wear boots and plan on getting wet and muddy. Call to register. Info: 570-828-2319 or peec@peec.org.

JUN. 22**Rising Notes: A Youth Music Circle**

1-3 p.m. Stoneworks Youth Center (behind The Cooperage), Honesdale. For 8-18 year olds. An informal, friendly atmosphere where young instrumentalists can enjoy playing for and with each other. Bring your own instruments. There is no pressure to perform. There is a jam session featuring folk and popular tunes that have tunes and chord progressions simple enough for young players. Free. Info: 570-253-2020 or thecooperageproject.org.

JUN. 22**Ecozone Discovery Room!**

1-4 p.m. Pocono Environmental Education Center, Dingmans Ferry. Climb into a bald eagle's nest, crawl into a bat cave, explore a beaver lodge, and dig in a fossil pit. Explore this indoor discovery room and enjoy hands-on exhibits on natural history, sustainability and the local environment. No registration required. Info: 570-828-2319 or peec@peec.org.

JUN. 22**The Lenape Ethnobotany Program: Use of Native Plants**

2 p.m. Delaware Township municipal building, Dingmans Ferry. Free. Lenape Clan Mother, Shelley Windamakwi DePaul, presents how native plants have been used for food, medicine, and other purposes by Native Americans. Info: dfhistorical1735@gmail.com.

JUN. 23**Wayne County Choralaires**

7:30 p.m. Central Park, Honesdale. Wayne Cty. Creative Arts Council Summer Festival of Events. Bring a chair or blanket. Rain dates and locations will be posted on Facebook. Free.

Info: [WayneCreativeArts](https://www.facebook.com/WayneCreativeArts) on Facebook.

JUN. 24**Mystery Zoom**

Noon-1 p.m. Delaware Highlands Conservancy. Engage with them each week on social media to try and guess the theme based on clues and questions they share. Each Zoom covers a different topic, so see if your guess was right. And if the topic sparks your interest, stick around and learn something new.

Info: 570-226-3164 or rachel@delawarehighlands.org.

JUN. 24**Tuesdays on the Terrace with Live Jazz and Casual Dining**

5-9 p.m. French Manor Inn and Spa, Newfoundland. Reservations & info: 570-676-3244 or info@thefrenchmanor.com.

JUN. 25**Jazz on the Deck**

5:30 p.m., 7:30 p.m. The Settlers Inn, Hawley. Through Aug. 27. Live jazz, farm-to-table summer menu, and a view of the garden. Reservations recommended. Info: 570-226-2993 or desk@thesettlersinn.com.

JUN. 26**Cocktails for Conservation**

6-8 p.m. Lacawac Sanctuary, Lake Ariel. Savor an evening of signature cocktails, artfully crafted hors d'oeuvres, and delectable small plates from the Mustard Seed Café. Three Hammers Winery, The Jam Room Brewing Company, and Skunk Hollow Distillery will be on site offering complimentary samples of their craft beverages. Benefits environmental education programs. Info: 570-689-9494 or info@lacawac.org or lacawac.org.

JUN. 26**Kellogg's Classic Band**

7:30 p.m. Central Park, Honesdale. Wayne Cty. Creative Arts Council Summer Festival of Events. Bring a chair or blanket. Rain dates and locations will be posted on Facebook. Free.

Info: [WayneCreativeArts](https://www.facebook.com/WayneCreativeArts) on Facebook.

JUN. 27**Ask a Forester**

1-2:30 p.m. Van Scott Nature Reserve of the Delaware Highlands Conservancy, Beach Lake. Relaxed hike at the Reserve with Trevor Tochydlowski, Forest Specialist from the Wayne County Conservation District, who will be on hand to share his knowledge and answer your questions. Sloped terrain. Wear closed-toe shoes and clothes are appropriate for the weather. All ages and experience levels. Advance registration

requested. Info: 570-226-3164 ext. 2 or rachel@delawarehighlands.org.

JUN. 28

Fairy Tale Lane

10 a.m.-2 p.m. 994 Main St., Newfoundland. Find many fairy-themed items and edibles, and enter to win some free prizes at the Newfoundland Farmers' and Artisans' Market. Free parking. Rain date Jul. 5. Info: Facebook page or gardeninjones@yahoo.com.

JUN. 28

Fishing for Everyone

9 a.m.-Noon. Pocono Environmental Education Center, Dingmans Ferry. Join PEEC and NPS staff for an exciting morning of fishing. Program is all about accessible fishing opportunities. Bilingual PEEC Staff will be leading the program, along with NPS Rangers who will be offering the Junior Rangers Angler Badge. Mobility-friendly fishing gear, along with all terrain wheelchairs, will be available. Participants over 16 must have a valid fishing license. Strictly catch and release. Call to register. Info: 570-828-2319 or peec@peec.org.

JUN. 28

Family Farm Day

10 a.m.-1 p.m. Farm Arts Collective, Damascus. Events include ongoing farm tours, touch-a-tractor, planting sunflower seeds to take home, harvesting flowers and vegetables from the fields, making print-art with ink, plant matter, leaves and flowers, face-painting, taste-test vegetables, and more. Info: 917-566-7698 or tannis@farmartscollective.org.

JUN. 28

Photography (oil & water abstract)

10:30 a.m.-Noon. Art Factory of White Mills, White Mills. Workshop with artist Bill Brown. Bring camera with macro lens. All materials included. Pre-registration required. Info: 570-251-1181 or info@theartfactoryofwhitemills.com.

JUN. 28

Pond Investigation

11 a.m.-1 p.m. Van Scott Nature Reserve of the Delaware Highlands Conservancy, Beach Lake. Take an in-depth look into life in a pond. Space limited. Prior registration required. Children must be accompanied by an adult to attend the program. Info: 570-226-3164 ext. 2 or rachel@delawarehighlands.org.

JUN. 28

Tricky Tray

Noon. Beach Lake Fire Hall, Beach Lake. Honoring the memory of Edward J. Bayly. Drawing at 2 p.m. Food, refreshments, door prizes, basket raffle, 50/50s, bake sale, plant sale, more. Benefits American Legion 87. Info: Jean Robey, 570-729-7706 or Karen Buckingham, 570-253-4448.

JUN. 28

Abstract Watercolor

1-2:30 p.m. Art Factory of White Mills, White Mills. Workshop with artist Chrissie Kozlowski. All materials included. Pre-registration required. Info: 570-251-1181 or info@theartfactoryofwhitemills.com.

JUN. 28

Intro to Orienteering

1-3 p.m. Pocono Environmental Education Center, Dingmans Ferry. Learn how to use a map & compass

on PEEC's orienteering course. They'll show you the basics before you try to find all the points. Call to register. Info: 570-828-2319 or peec@peec.org.

JUN. 28

Summer Sounds - Marc Von Em

2-5 p.m. Three Hammers Winery, Hawley. An acoustic performance on the grounds of the winery. Info: 570-949-4688 or info@threehammerswinery.com.

JUN. 28

A Contra Dance

7:30-10 p.m. The Cooperage, Honesdale. All are welcome to dance along to live music performed by Cherry Orchard and others, no experience necessary. Caller Laurie B. will do a beginner lesson starting at 7:15. Beginners are most welcome. Contra dance is a folk dance made up of long lines of couples. Info: 570-253-2020 or thecooperageproject.org.

JUN. 29

Pond Paddle

10 a.m.-Noon. Pocono Environmental Education Center, Dingmans Ferry. Join PEEC for a paddle around their ponds. Beginners are welcome -- They teach you everything you need to know. Dress appropriately; you may get wet. Call in advance to reserve a boat. Info: 570-828-2319 or peec@peec.org.

JUN. 29

Acrylic Pour

10:30 a.m.-Noon. Art Factory of White Mills, White Mills. Workshop with artist Cindy Davis. All materials included. Pre-registration required. Info: 570-251-1181 or info@theartfactoryofwhitemills.com.

JUN. 29

Wacky Science Adventures

1-3 p.m. Pocono Environmental Education Center, Dingmans Ferry. Put on your lab coats and prepare to conduct some crazy experiments. You'll get to create your very own slime, oobleck, and attempt to launch a rocket into space. Call to register. Info: 570-828-2319 or peec@peec.org.

JUN. 29

Blues, Brews and BBQ

Dinner: 5-9 p.m.; Music: 6-9 p.m. Glass - Wine.Bar.Kitchen, Hawley. Through Aug. 31. A la carte menu with BBQ specials and a featured craft brew from Runaway Train Brewery, plus live blues music. Info: 570-226-1337 or info@ledgeshotel.com.

JUN. 30

Grillin' in Grant's Woods

5-8 p.m. Grant's Woods, The Settlers Inn, Hawley. Unique open-air dining experience in a relaxed, woodland setting. Reservations highly recommended: 570-226-2993. Info: desk@thesettlersinn.com.

On the Horizon

JUL. 1

Independence Day Celebration

6:30 p.m. Central Park, Honesdale. Wayne Cty. Creative Arts Council Summer Festival of Events. Doug Smith Band, 6:30 p.m., Crystal Band, 8 p.m. Food & novelty vendors. Fireworks by Greater Honesdale Partnership, approx. 9:30 p.m. Bring a chair or blanket. Rain dates and locations will be posted on Facebook. Free. Info: [WayneCreativeArts](https://www.waynecreativearts.com) on Facebook.



CATCH SOME AIR AT A COUNTY FAIR

Come for the rides, stay for the memories! Soar on towering attractions, cheer on demolition derbies, and indulge in crispy funnel cake—because nothing beats fair season in the Pocono Mountains. This summer, the region comes alive with family-friendly fun, sweet treats, and thrills around every corner.

PoconoMountains.com/Events.



**POCONO
MOUNTAINS™**
#PoconoMtns